



Document 19-1903

Book 2019 Page 1903 Type CORNR Pages 1
Date 5/20/2019 Time 9:19 AM
Rec Amt \$7.00

KAREN SCHWANEBECK, RECORDER
MARION COUNTY IOWA

Prepared by Abie C. Davis, P.E. & L.S., 1428 Oregon St., Knoxville, IA 50138 (641) 842-5863

UNITED STATES PUBLIC LAND SURVEY CORNER CERTIFICATE

OF

Land survey Monuments situated in Section 10, Township 74 N, Range 20W, of the Fifth Principal Meridian, Marion County, Iowa.

Previously recorded in Bk1, Pg 416 in County Recorders Office.

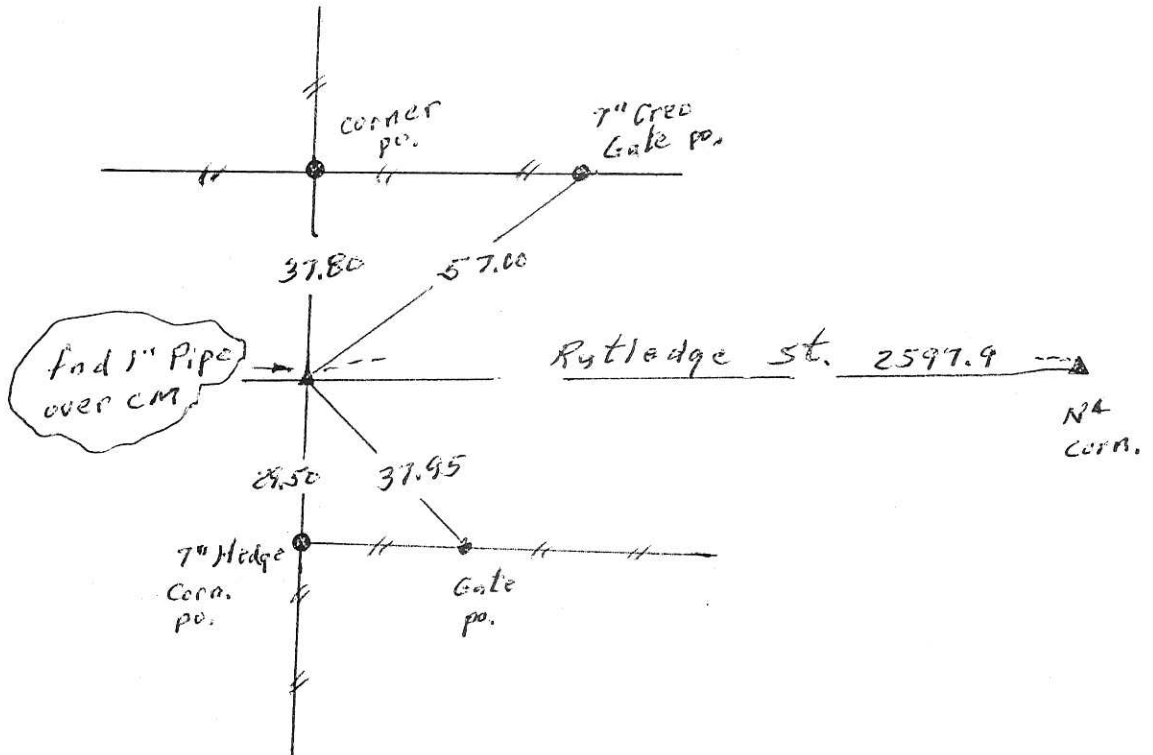
Show reason for preparing this certificate, the evidence and detailed procedures used in establishing the corner positions and monumentation found or placed

Monument Description and Remarks: End Corner & set out new ties.



PLAN - VIEW

(Show a minimum of three reference ties to durable physical objects, relevant monuments and physical conditions that will enable recovery of the corner.)



I hereby certify that the survey work was completed and this land surveying document was prepared by me or under my direct personal supervision and that I am a duly licensed land surveyor under the laws of the state of Iowa

Signature: Abie C Davis
Abie C. Davis, P.E. & L.S.

Date: 5/18/19 Reg. No. 5594

My license renewal date is December 31, 2019

SEAL



List Corners to be Indexed

Corners	Section	Twp	Range
NW	10	74N	20W

Pd \$7.00 Cash - Ret Abie Davis

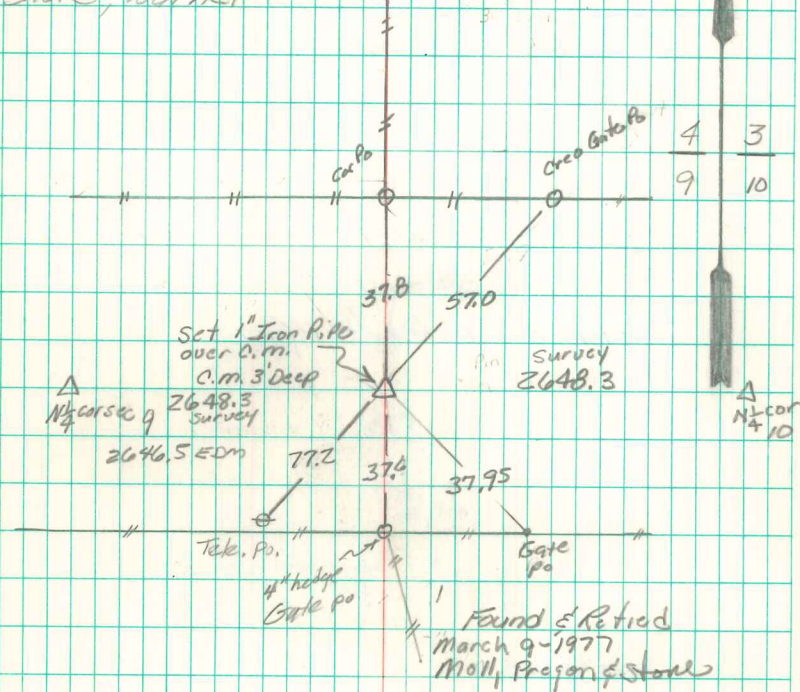
Found sandstone 20"x14"x3"
with concrete and small rocks
around it, over 2-2" o tile both
filled with concrete and
concrete around them.
(Watkins tile.)

Set Mon. over 1-2" o tile
lowered in place.
Stone on north side mon. at
top.

N.E. Cor. 9-74-20

Set 7-31-41

Notes: Kennedy
Party: Kennedy
Shore, Lutter



6/4/98 Abie Davis