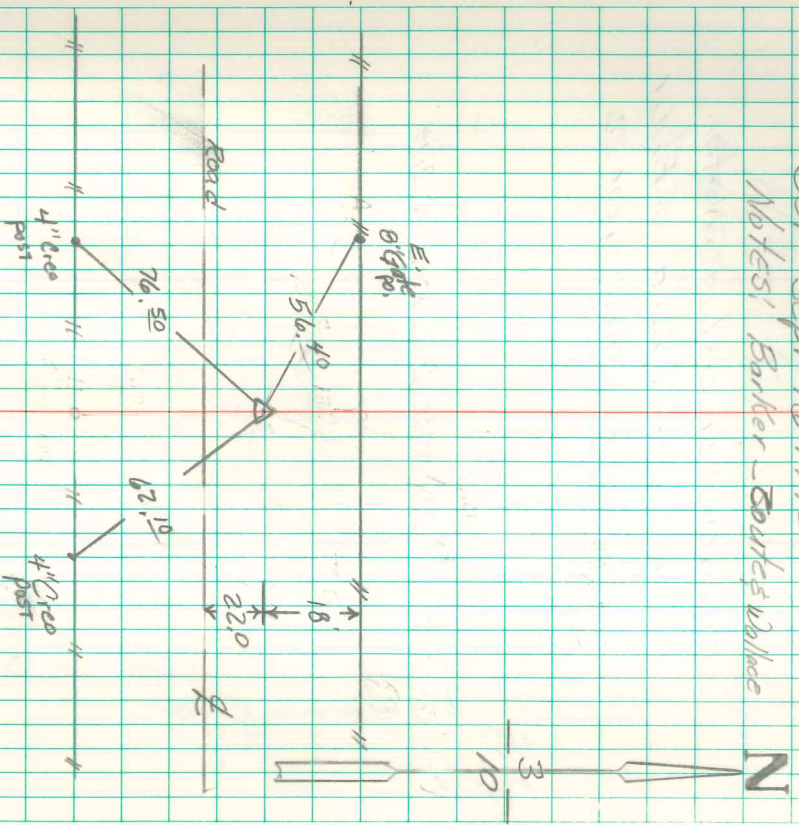


This corner was destroyed by excavation of road. Fred Hassel-hahn, owner of land south stated he saw stone & tile removed & dumped with dirt in culvert fill,

Set c.m. 1 foot below surface over broken tile with 15" ledge shaped conc Rock over c.m.

- 26320.0' South of center sec 3
- 1753.0' " Stone set by J.C. Nyg.
- 2513.0' West of c.m. of N.E. Cor. 1D
- 2046.0' North of cor B. at cor Sec 1D
- 1323.0' " of 1 1/4 Cor. Fence E&D.

N. 1/4 Cor. Sec 10-74-21
 Set - Sept 16-1942
 Notes: Barker - Sparks & Wallace



set 1 1/2 Pipe 1 ft deep w/ 5/8" iron pin w/ cap inside 3" deep
 5/22/97 Abie Davis