

2018-811

Prepared by Abie C. Davis, P.E. & L.S., 1428 Oregon St., Knoxville, IA 50138 (641) 842-5863

UNITED STATES PUBLIC LAND SURVEY CORNER CERTIFICATE

OF

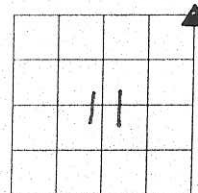
Land survey Monuments situated in Section 11, Township 74N, Range 21W, of the Fifth Principal Meridian, Marion County, Iowa.

Previously recorded in Bk 1, Pg 66 in County Recorders Office.

Show reason for preparing this certificate, the evidence and detailed procedures used in establishing the corner positions and monumentation found or placed

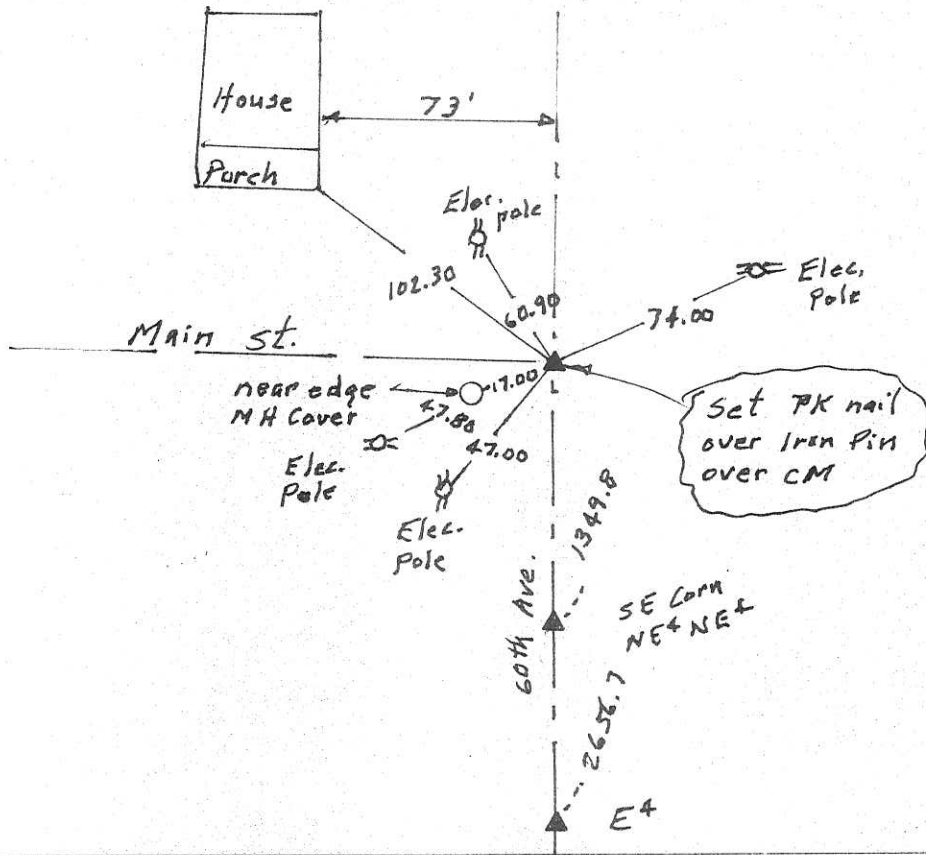
Monument Description and Remarks: Several old ties

changed. Set PK nail at corner in asphalt  
punt. and set out new ties.



PLAN - VIEW

(Show a minimum of three reference ties to durable physical objects, relevant monuments and physical conditions that will enable recovery of the corner.)



I hereby certify that the survey work was completed and this land surveying document was prepared by me or under my direct personal supervision and that I am a duly licensed land surveyor under the laws of the state of Iowa

Signature: Abie C Davis

Abie C. Davis, P.E. & L.S.

Date: 3/3/18 Reg. No. 5594

My license renewal date is December 31, 2019

SEAL



List Corners to be Indexed

Corners	Section	Twp	Range
---------	---------	-----	-------

NE	11	74N	21W
----	----	-----	-----

