

602106



Document 24-1614

Book 2024 Page 1614 Type CORNR Pages 1
Date 4/29/2024 Time 11:45 AM
Rec Amt \$7.00

NAOMI ELLIS, RECORDER
MARION COUNTY IOWA



P.O. Box 451, Oskaloosa, Iowa 52577-0451 Phone: (641)672-2526

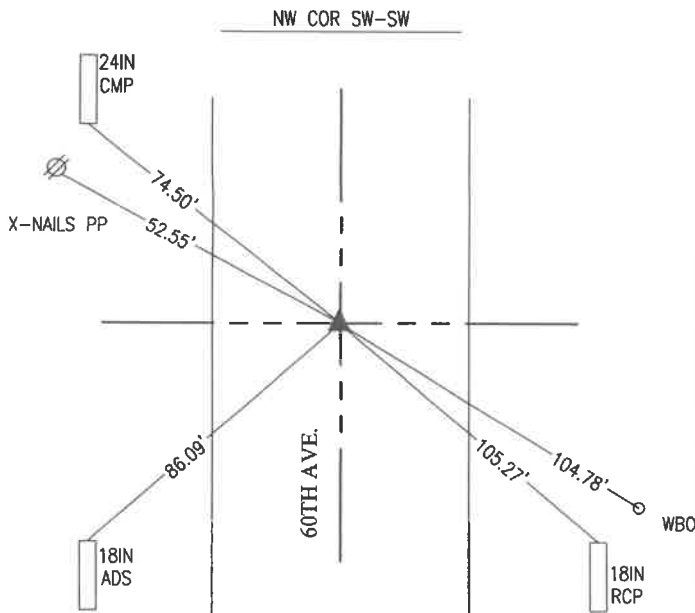
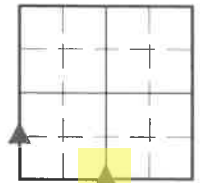
UNITED STATES PUBLIC LAND SURVEY CORNER CERTIFICATE OF

LAND SURVEY MONUMENTS SITUATED IN SECTION 1, TOWNSHIP 74, RANGE 21,
OF THE FIFTH PRINCIPAL MERIDIAN, MARION COUNTY, IOWA.

PREVIOUSLY RECORDED IN NO CERTIFICATE OF RECORD IN COUNTY RECORDER'S OFFICE.

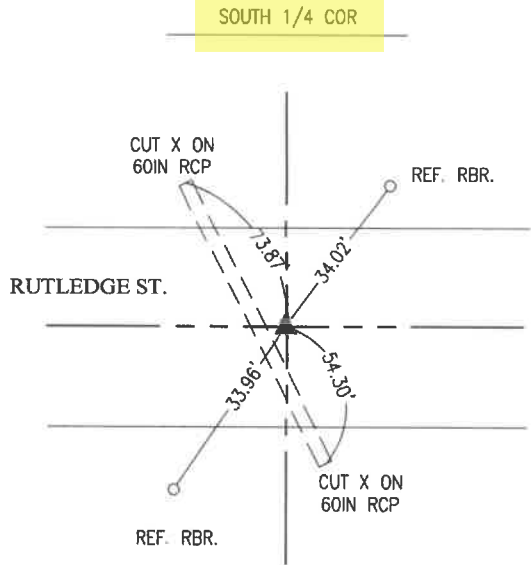
MONUMENT DESCRIPTION AND REMARKS:

SEE BELOW



MAY 2019
LS 19968 SET A MAG NAIL AT THIS LOCATION AS PART OF THE SURVEY RECORDED IN BOOK 2019 ON PAGE 2119.

APRIL 2024
FOUND MAG NAIL IN 60TH AVE. THE DISTANCE SOUTH TO THE SW CORNER DOESN'T MATCH THAT OF RECORD (1314.84' MEASURED VS. 1315.50' RECORDED). THE DISTANCE WEST TO THE NE CORNER OF THAT TRACT OF LAND SURVEYED BY LS 19968 WAS A FOOT LONG. SEARCHED 1' NORTHWESTERLY AT THE CALCULATED POSITION BUT DID NOT DETECT A MAGNETIC TONE. DECIDED TO HONOR THE MAG NAIL RATHER THAN CREATE A PIN CUSHION



APRIL 2024
FOUND 5/8" REBAR 12" DEEP FROM COUNTY ENGINEER TIES.

I hereby certify that this land surveying document was prepared and the related survey work was performed by me or under my direct personal supervision and that I am a duly licensed Professional Land Surveyor under the laws of the State of Iowa.

LIST CORNERS TO BE INDEXED

CORNERS	SECTION	TOWNSHIP	RANGE
NW COR SW-SW	1	74	21
SOUTH 1/4	1	74	21



Bobby J. Maddaleno 4-26-24
Bobby J. Maddaleno, P.L.S. Date
License number: 19960
My license renewal date is December 31, 2025

fd 10/22/24 - Rut Garden Env.

Established this cor. Chained
 between stones at North East &
 North West Cor. of sections midpoint
 & Double the $\frac{1}{4}$ East Comes in Deep
 Fill over a conc Box Culvert &
 Ditch original Cor. Destroyed. Line
 From Stone at Center sec. & corner
 Post at $\frac{1}{4}$ Corner comes at a point
 2602 Feet West of Sec. Corner &
 1 Foot East of 2x the East $\frac{1}{4}$.
 Established corner on Direct Line
 between sec. corners on old Est. E
 Line south & set c.m. over 1-2" fill
 Filled with concrete. Iron bolt $8 \times \frac{1}{2}$ "
 With $6 \times 8 \times 16$ " Stone over c.m.

2644.0' North of Stone at Center Sec.
 2602.0' West of C.M. at N.E. Cor. Sec.
 2609.0' East of C.M. at N.W. Cor. Sec.

N. $\frac{1}{4}$ Cor Sec 12-74-21

Set: Aug-1-1941

Notes: Kennedy - Barker, Mandell
 & Frazier

Mail Henning & Richards
 Foundy Retied
 Aug-29-1978

