

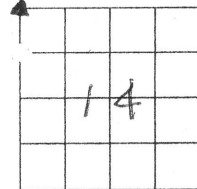
Prepared by Abie C. Davis, P.E. & L.S., 1428 Oregon St., Knoxville, IA 50138 (641) 842-5863

UNITED STATES PUBLIC LAND SURVEY CORNER CERTIFICATE OF

Land survey Monuments situated in Section 14, Township 74N, Range 21W, of the Fifth Principal Meridian, MARION County, Iowa.

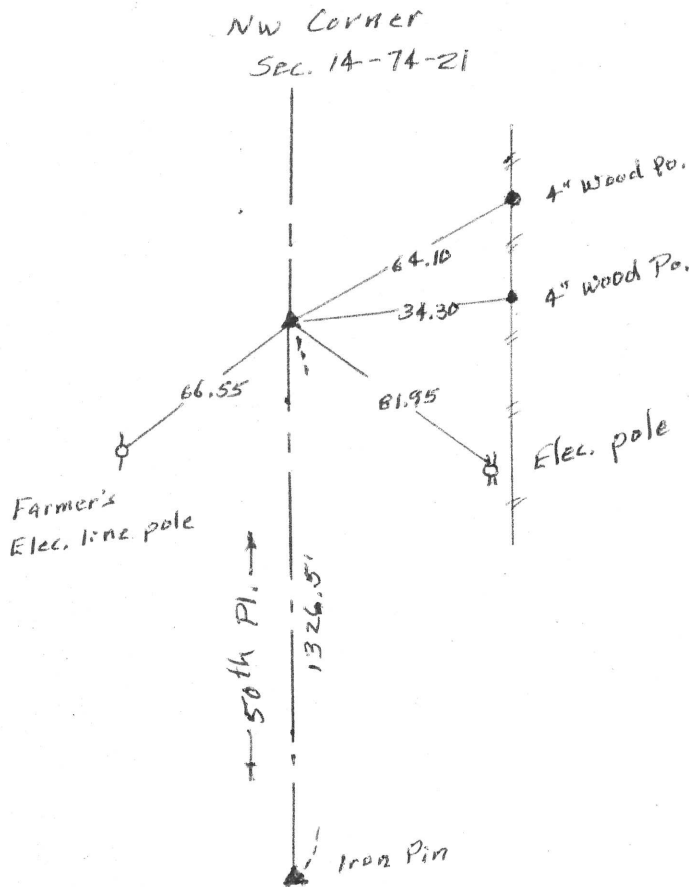
Previously recorded in N/A in County Recorders Office.
(book, page, document number, etc.)
Show reason for preparing this certificate, the evidence and detailed procedures used in establishing the corner positions and monumentation found or placed

Monument Description and Remarks: Iron Pin over CM
previously set on County Constr. proj. #2353
was gone. Set new 3/8" Iron Pin w/ Cap #5594
from remaining ties and set out new ties.



PLAN - VIEW

(Show a minimum of three reference ties to durable physical objects, relevant monuments and physical conditions that will enable recovery of the corner.)



I hereby certify that the survey work was completed and this land surveying document was prepared by me or under my direct personal supervision and that I am a duly licensed land surveyor under the laws of the state of Iowa

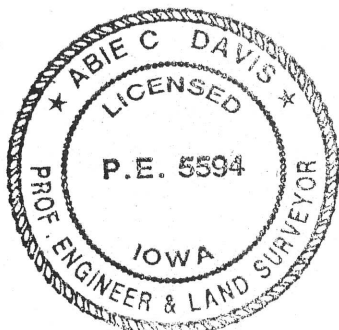
Signature: Abie C. Davis

Abie C. Davis, P.E. & L.S.

Date: 10/9/15 Reg. No. 5594

My license renewal date is December 31, 2015

SEAL



List Corners to be Indexed

Corners	Section	Twp	Range
NW	14	74N	21W

Found 2 - 3" Horse shoe tile
4" x 12" x 12" Flint stone
Set C.M.

N.E. Cor Sec 15-74-21

20

Set April 11-1940

Thomas

