



Document 19-4620

Book 2019 Page 4620 Type CORNR Pages 1
Date 10/07/2019 Time 10:18 AM
Rec Amt \$7.00

KAREN SCHWANEBECK, RECORDER
MARION COUNTY IOWA

Prepared by Abie C. Davis, P.E. & L.S., 1428 Oregon St., Knoxville, IA 50138 (641) 842-5863

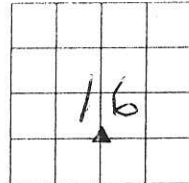
UNITED STATES PUBLIC LAND SURVEY CORNER CERTIFICATE OF

Land survey Monuments situated in Section 16, Township 74N, Range 21W, of the Fifth Principal Meridian, Marion County, Iowa.

Previously recorded in N/A in County Recorders Office.

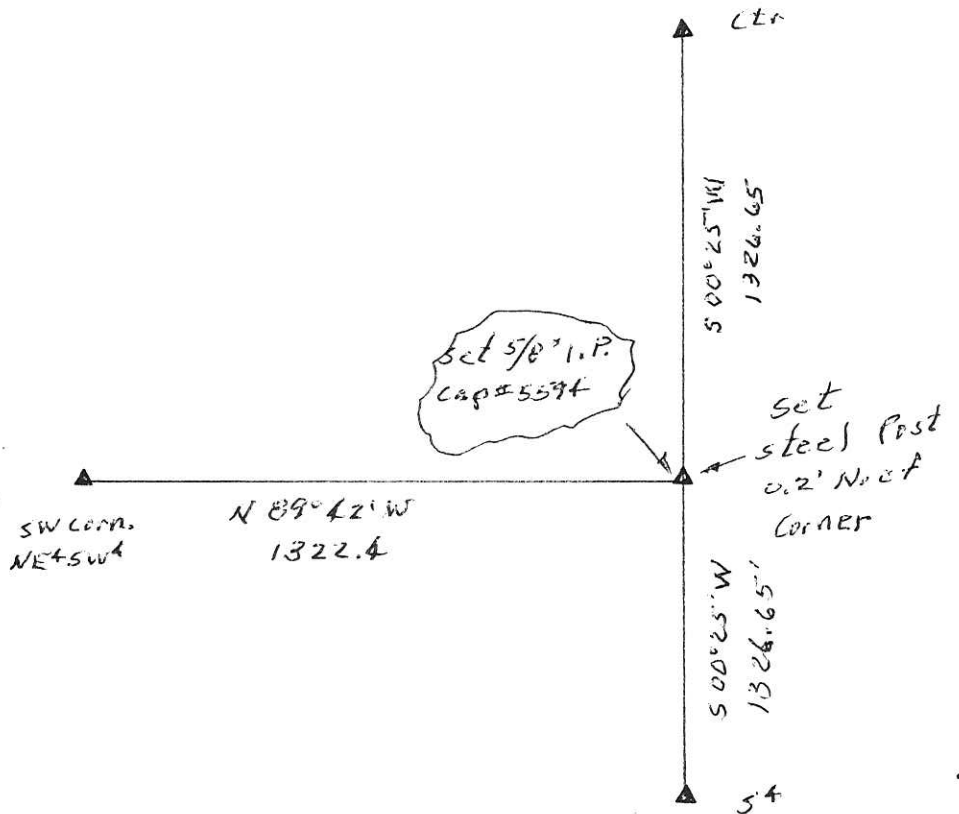
Show reason for preparing this certificate, the evidence and detailed procedures used in establishing the corner positions and monumentation found or placed

Monument Description and Remarks: set corner at the mid-point of line between the center and the S⁴ corner of section.



PLAN - VIEW

(Show a minimum of three reference ties to durable physical objects, relevant monuments and physical conditions that will enable recovery of the corner.)



I hereby certify that the survey work was completed and this land surveying document was prepared by me or under my direct personal supervision and that I am a duly licensed land surveyor under the laws of the state of Iowa

Signature: Abie C. Davis
Abie C. Davis, P.E. & L.S.

Date: 10/4/19 Reg. No. 5594

My license renewal date is December 31, 2019

SEAL



List Corners to be Indexed
Corners Section Twp Range

SE Corner 16 74N 21W
NE+SW

Pd \$700 Cash - Ref Abie Davis

11