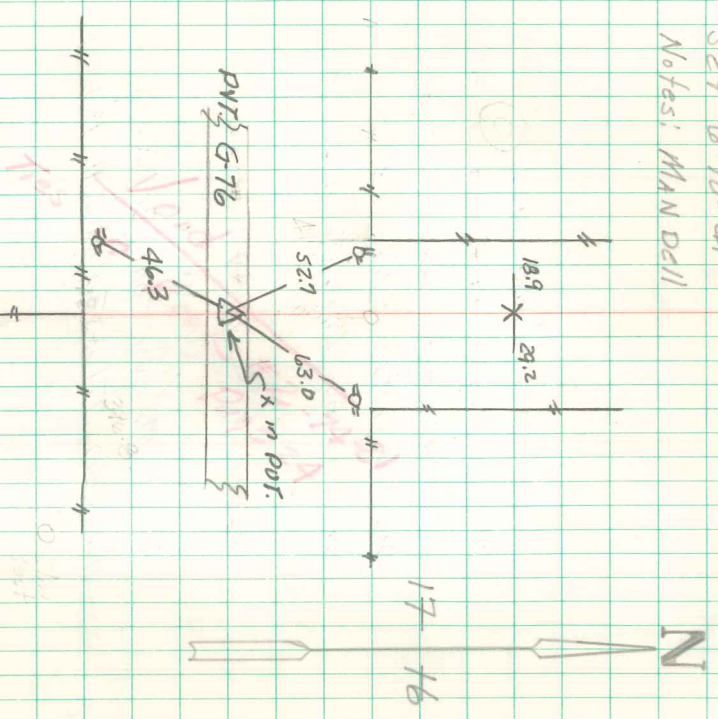


Found sandstone No tile  
 Put 1/2 tile in place and  
 set C.M. on top of tile

1/4 Cor Sec. 17-24-21  
 Sect 6-10-41  
 Notes: MAIN DRI

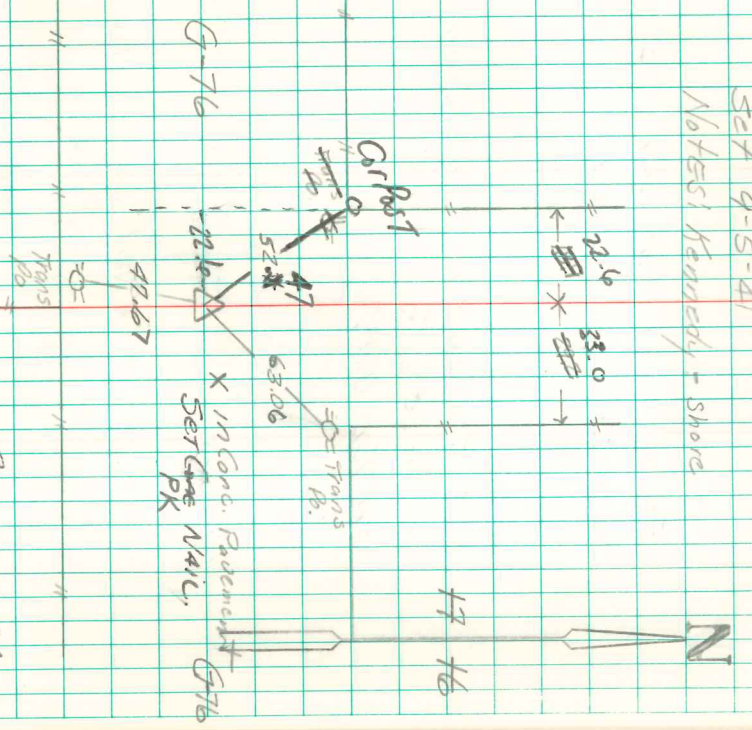


Void Corner  
 Book 21  
 This is not  
 page 21

E. 1/4 Cor Sec 17-74-21

Set 9-S-41

Notes: Kennedy + Shore



RETIE 8-29-84

C.L. MAH  
T.J. Fregon  
RE. STONE

RECAL 3/25/1988  
5/17/93  
Abie Dours  
6/9/96

Found 2 small stones over a  
Large Sand Stone 17"x12"x3" over  
one 2" O Tile 15" long.  
Set c.m. over the tile lowered  
in place.  
Ret Large Sandstone top c.m.