



Document 21-1715

Book 2021 Page 1715 Type CORNR Pages 1
Date 3/19/2021 Time 11:59 AM
Rec Amt \$7.00



GARDEN & ASSOC.

P.O. Box 451, Oskaloosa, Iowa 52577-0451 Phone: (641)672-2526

KAREN SCHWANEBECK, RECORDER
MARION COUNTY IOWA

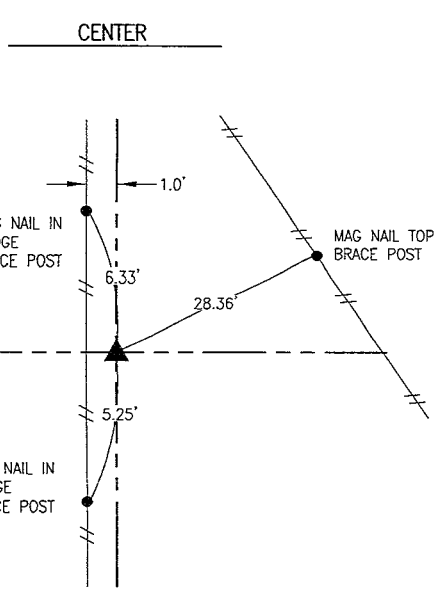
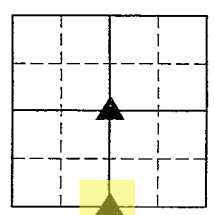
UNITED STATES PUBLIC LAND SURVEY CORNER CERTIFICATE

OF

Land Survey Monuments situated in Section 7, Township 74, Range 21, of the Fifth Principal Meridian, MARION County, Iowa.

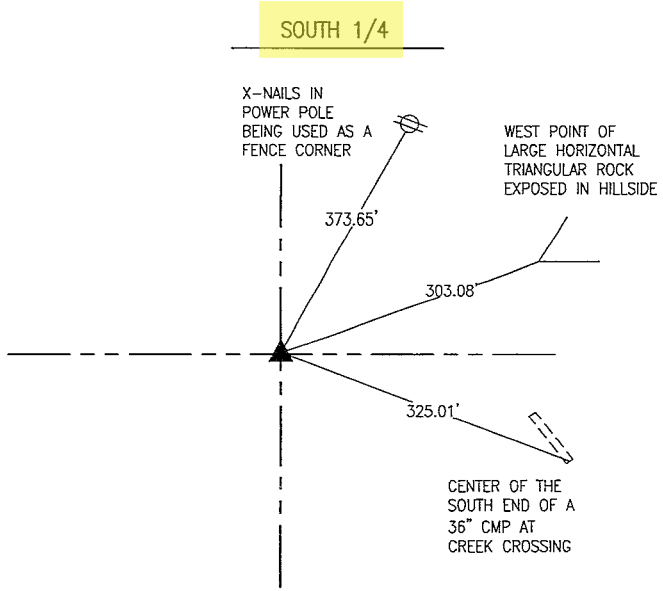
Previously recorded in NO CERTIFICATE OF RECORD in County Recorder's Office.

Monument Description and Remarks: SEE BELOW



MARCH 2021
THERE ARE NO RECORDS OF THIS CORNER BEING SET IN THE COUNTY ENGINEER AND RECORDER'S OFFICES.

EXTENDED A LINE BETWEEN THE MONUMENTS FOUND AT THE NORTH 1/4 CORNER AND THE SW CORNER OF THE NW-NE OF SECTION 7-74-21 SOUTHERLY TO THE WESTERLY EXTENSION OF A LINE BETWEEN THE EAST 1/4 AND EXISTING FENCE RUNNING THE SOUTH LINE OF THE NE 1/4. THIS LOCATION DOES NOT MATCH THE THEORETICAL CENTER OF SECTION. THIS IS MOST LIKELY BECAUSE SECTION 7 MEASURES 45 TO 53 FEET LONG IN THE NORTH-SOUTH DIMENSION. HOWEVER, IT DOES MATCH EXISTING FENCES IN THE NE 1/4 VERY WELL.



AUGUST 1942
COUNTY ENGINEER SET CONCRETE MONUMENT 1' DEEP AT THIS LOCATION.

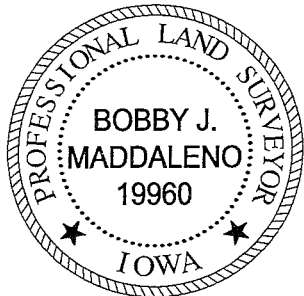
MARCH 2021
ALL OF THE 1942 ENGINEER TIES HAVE BEEN OBLITERATED AS THE CORNER FALLS IN A CULTIVATED FIELD. CALCULATED SEARCH AREA, DUG AND PROBED FOR MONUMENT. DID NOT FIND. SET 5/8" X 30" REBAR WITH CAP #19960 15" DEEP AT THE EXTENSION OF FENCES RUNNING THE SOUTH LINE OF THE SW 1/4 OF SEC. 7-74-21 AND THE WEST LINE OF THE NE 1/4 OF SEC. 18-74-21. THIS IS THE SAME METHOD USED BY THE COUNTY ENGINEER IN 1942 ACCORDING TO THE NOTES.

I hereby certify that this land surveying document was prepared and the related survey work was performed by me or under my direct personal supervision and that I am a duly licensed Professional Land Surveyor under the laws of the State of Iowa.

Bobby J. Maddaleno 3-16-21
Bobby J. Maddaleno, P.L.S. Date

License number: 19960
My license renewal date is December 31, 2021

SEAL



List Corners to be Indexed			
Corners	Section	Township	Range
CENTER	7	74	21
SOUTH 1/4	7	74	21

PL 1715 CK - Ret Garden & Assoc.

Corner Established & Conc. mas.
set by B.W. Dutton Co. Engineer
Aug 19-1942 - at intersection of
Line From south over stone at
center sec 18 & stone $\frac{1}{4}$ North of
center section with Line From
N.W. Corner sec. 18. over Point
Established by R.S. Johnson over
N.E. Cor. N.W. $\frac{1}{4}$ of NW $\frac{1}{4}$ sec. 18.

Set C.M. 1' Below surface

N $\frac{1}{4}$ Cor sec - 18-74-21

Set - Aug - 19 - 1942

Notes: Kennedy - Mandell

