

Prepared by: Abie C. Davis, P.E. & L.S., 1428 Oregon St., Knoxville, Iowa 50138 Phone: (515) 842-5863

# UNITED STATES PUBLIC LAND SURVEY CORNER CERTIFICATE

OF

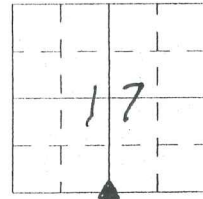
SLS19-94

Land survey Monuments situated in Section 17, Township 74N, Range 21W, of the Fifth Principal Meridian, Marion County, Iowa.

Previously recorded in Book 1, Page 170 in County Recorders Office.

(book, page, document number, etc.)  
Show reason for preparing this certificate, the evidence and detailed procedures used in establishing the corner positions and monumentation found or placed

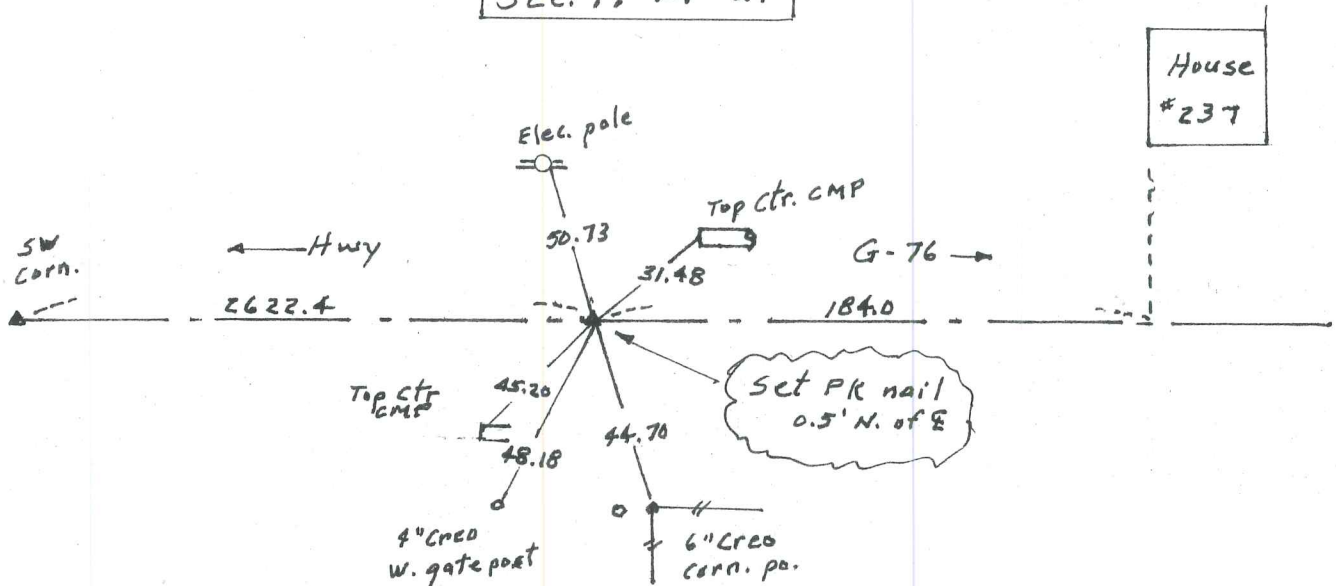
Monument Description and Remarks: Located corner from old ties. Set PK nail in asphalt pmt. and set out new ties.



## PLAN - VIEW

(Show a minimum of three reference ties to durable physical objects, relevant monuments and physical conditions that will enable recovery of the corner.)

S4 Corner  
Sec. 17-74-21



I hereby certify that the survey work was completed and this land surveying document was prepared by me or under my direct personal supervision and that I am a duly licensed land surveyor under the laws of the state of Iowa

Signature: Abie C. Davis  
Abie C. Davis, P.E. & L.S.

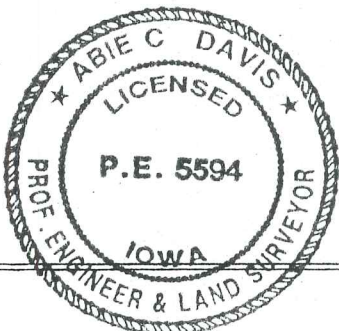
Date: 11/27/13 Reg. No. 5594

My license renewal date is December 31, 2013

List Corners to be Indexed

Corners	Section	Twp	Range
S4	17	74N	21W

SEAL



Dug hole 10'x12'x3' in line  
of fence south.

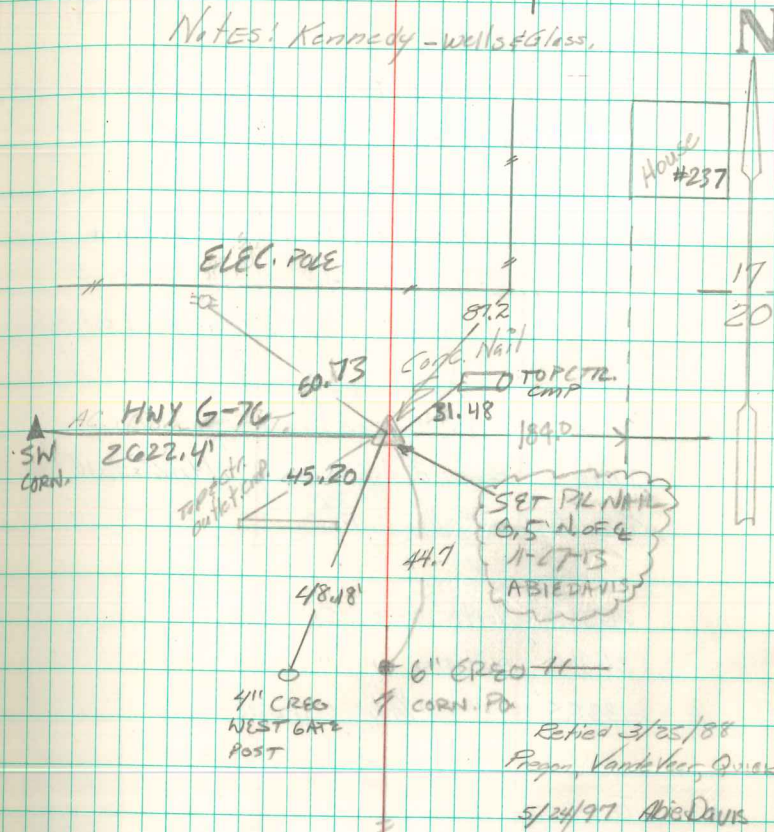
Found small Lime Rock on edge.  
Right where we set C.M.

Set C.M. over 1-2" tile standing  
on END.

Put Rock on top C.M.

N $\frac{1}{4}$  Cor Sec 20-74-21 | SW $\frac{1}{4}$  CORNER  
Set 9-19-41 | SEC. 17-74-19

Notes: Kennedy - wells & Glass.



SET OUT NEW TIES  
ABIE DAVIS 11-27-13