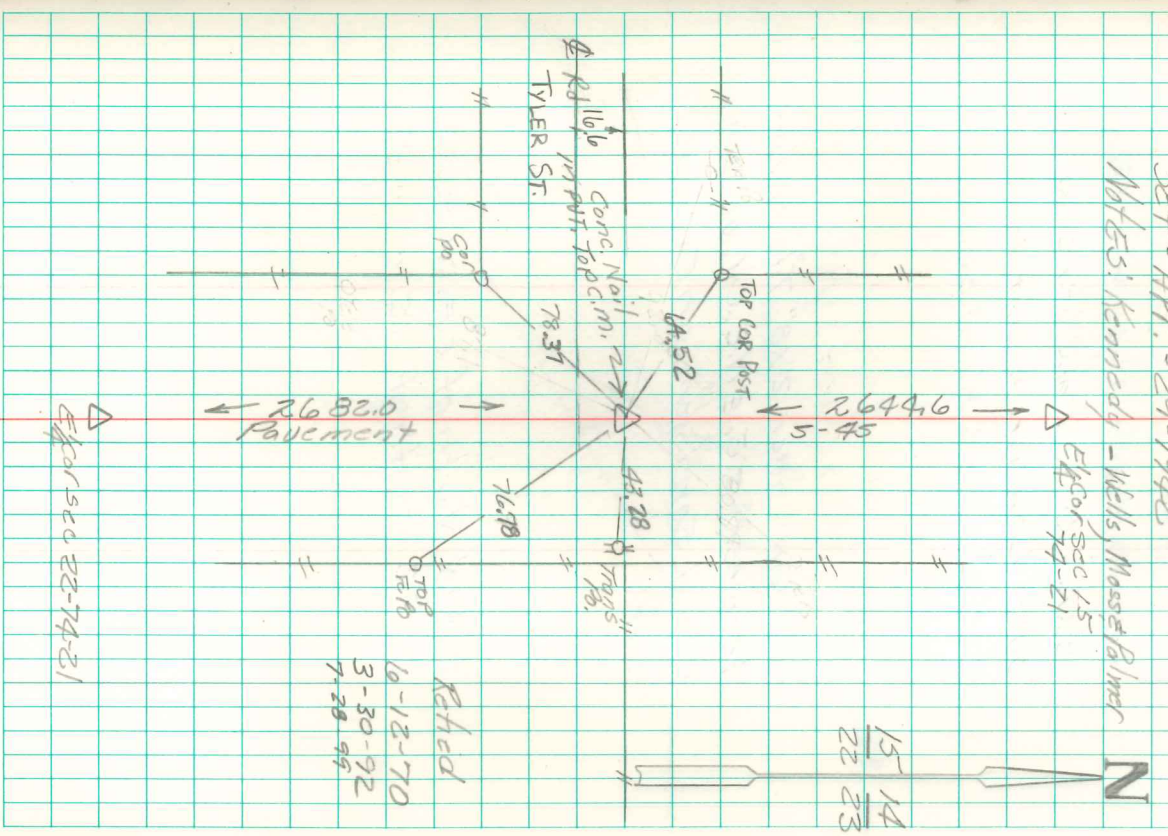


N.E. Cor Sec 22-74-21

Set - APR. - 29-1948

Notes: Kennedy - Wells, Mass & Blinn

Elev of Sec 15
74-21



Found Lime Rock 14x12x6"
over 2-2" Horse Shoe Tile.

Set C.M. over one of the tile
Lowered in Place.

Put Lime Rock Top C.M.