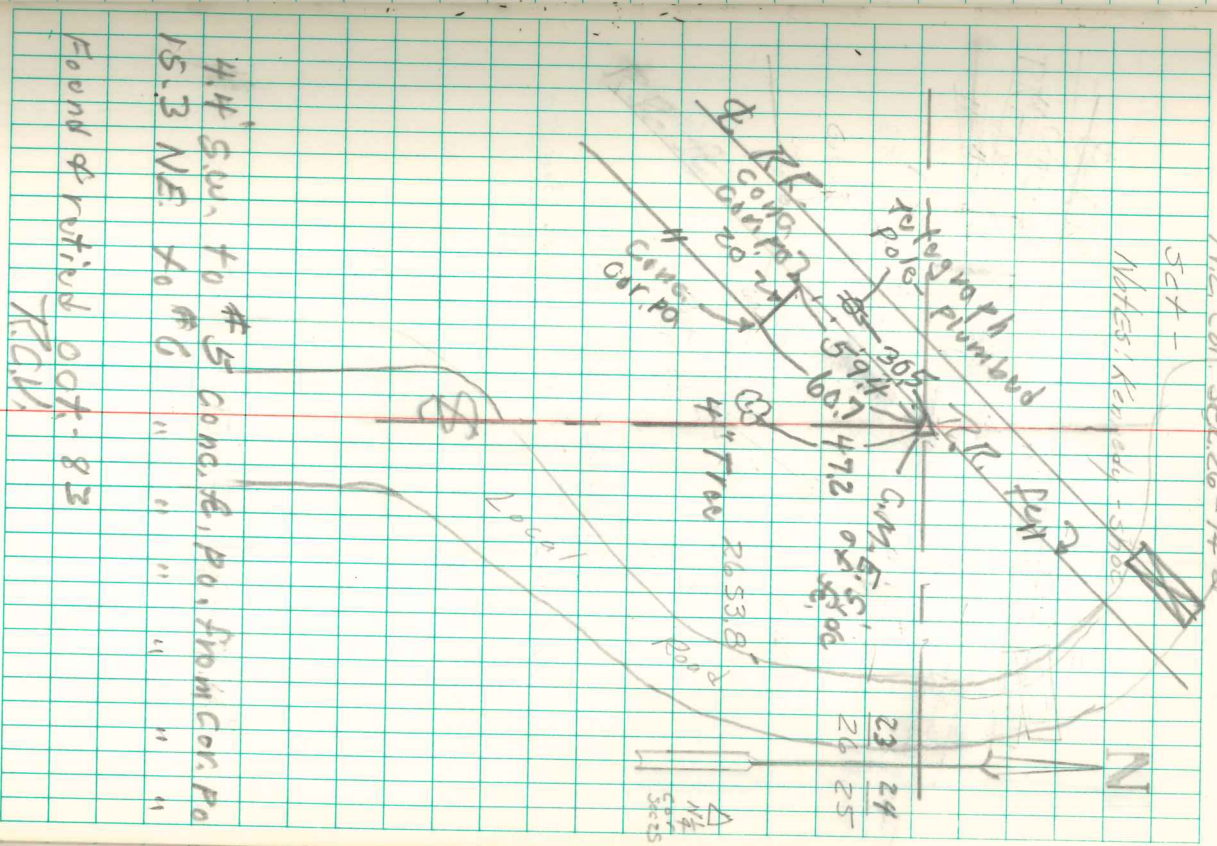


NE Cor. SEC. 26-74-21

SET -

WATER KEPT OUT - 5700



4.4' S.W. to #5 CONCR. P. FROM COR. PO
 15.3' NE to #6 " " " " " " " "

Found & returned OCT-83
 K.G.M.

Found large Sand Stone 30x15x7"
 Laying Flat on Rail Road Right of way E.

Stone Found was set on Former Survey
 Markings. Tile had been washed out
 by erosion.

Set mm & Part Stone TOP C.M.

1329.3' W. of 1/4 line E & N. & S.
 2653.8' W. " C.M. N. Cor. 85-74-21

~~741' SE. of 5th unit SW. of Bridge
 56.8' SE " 4th " From bridge
 44' SE. " Concrete P. Right of way E
 15.3' SW " " " " "
 60.1' NE. " " Gate B.
 30.2' SE. " " Nails in tile Rk.~~