

Reestablished:

Run line N.E.S. between 2 sec. cor. stones

2nd hole 8' x 20' on line with center of old Rd.

E. & on G. line west in deep Roadcut.

Found No. Evidence. Used old established

E line west & Double the measurements of

1/4 From South as Evidence, & Established cor. line.

Set man over Broken Crookery & Broken

Drile 12' Below old Road Bed with 6' x 8' x 10"

Granit Rock over c.m.

2636.5' North of sec. cor.

26710" South " " "

1335.5' " " 1/4" " Fence East.

This Cor. Destroyed by Construction

in 1942 Reestablished may 23-1963, set

1" Iron Bar in With E. West + on line

Between S.E. Corner & N.E. cor of Sec 27.

by R. Vinson, Howell, Randall & Flanders.

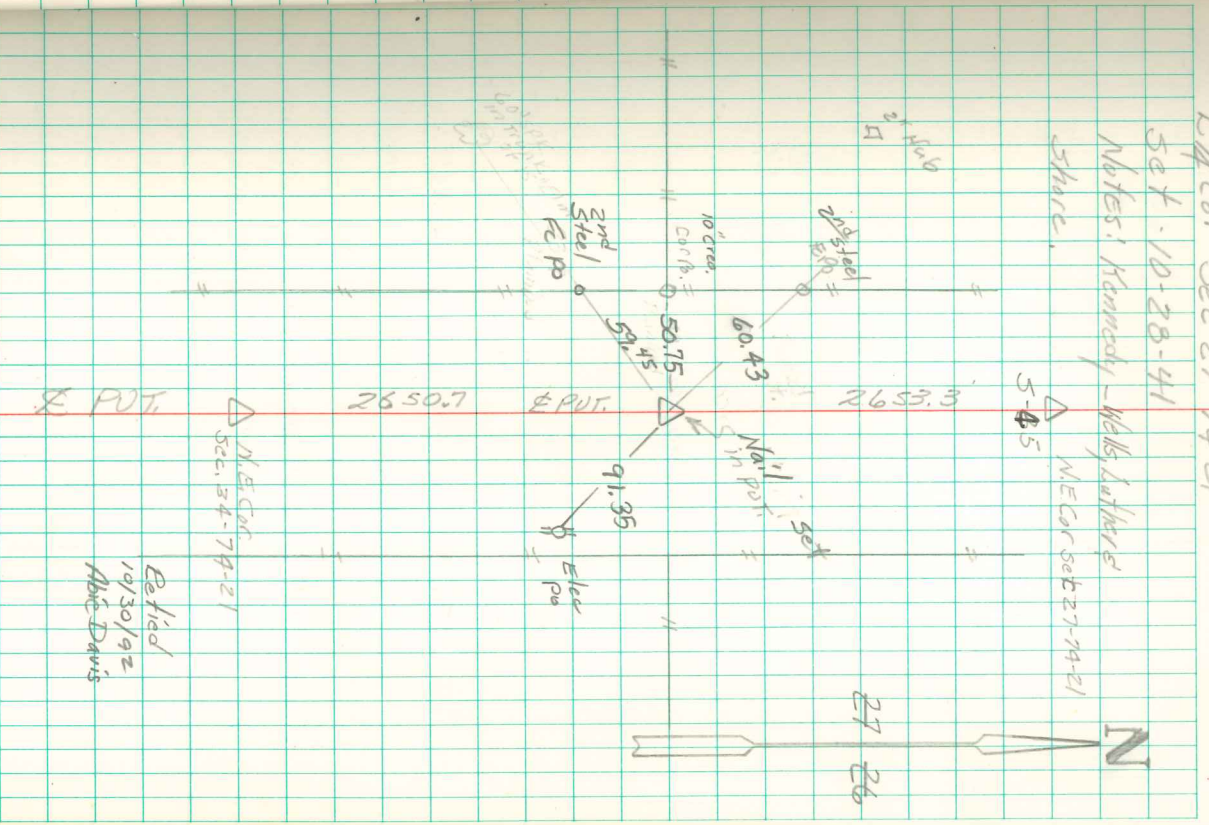
E 1/4 Cor Sec 27-74-21

Set - 10-28-41

Notes: Kennedy - Wells, Luther's

Share, N.E. Cor set 27-74-21

5-45



Revised
10/30/92
Abie Davis