

602106



Document 24-1614

Book 2024 Page 1614 Type CORNR Pages 1  
Date 4/29/2024 Time 11:45 AM  
Rec Amt \$7.00

NAOMI ELLIS, RECORDER  
MARION COUNTY IOWA



P.O. Box 451, Oskaloosa, Iowa 52577-0451 Phone: (641)672-2526

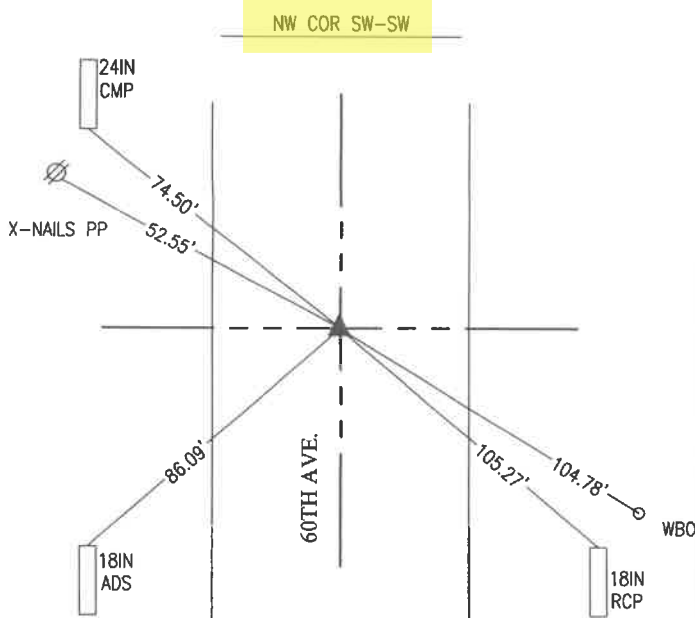
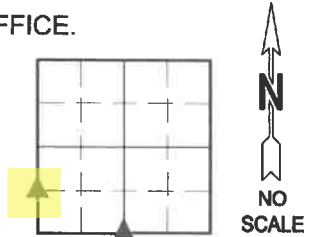
UNITED STATES PUBLIC LAND SURVEY CORNER CERTIFICATE OF

LAND SURVEY MONUMENTS SITUATED IN SECTION 1, TOWNSHIP 74, RANGE 21,  
OF THE FIFTH PRINCIPAL MERIDIAN, MARION COUNTY, IOWA.

PREVIOUSLY RECORDED IN NO CERTIFICATE OF RECORD IN COUNTY RECORDER'S OFFICE.

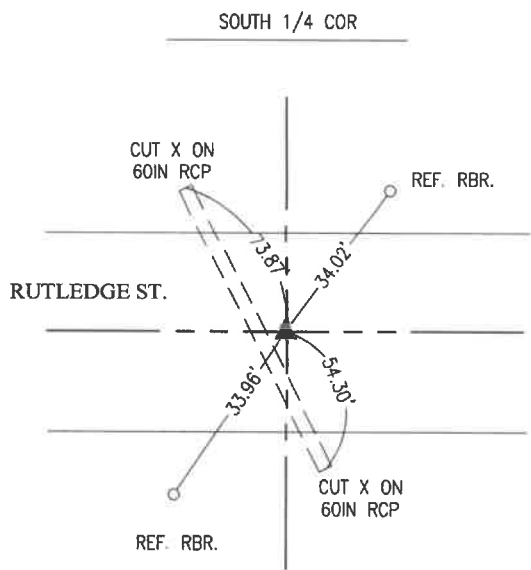
MONUMENT DESCRIPTION AND REMARKS:

SEE BELOW



MAY 2019  
LS 19968 SET A MAG NAIL AT THIS LOCATION AS PART OF THE SURVEY RECORDED IN BOOK 2019 ON PAGE 2119.

APRIL 2024  
FOUND MAG NAIL IN 60TH AVE. THE DISTANCE SOUTH TO THE SW CORNER DOESN'T MATCH THAT OF RECORD (1314.84' MEASURED VS. 1315.50' RECORDED). THE DISTANCE WEST TO THE NE CORNER OF THAT TRACT OF LAND SURVEYED BY LS 19968 WAS A FOOT LONG. SEARCHED 1' NORTHWESTERLY AT THE CALCULATED POSITION BUT DID NOT DETECT A MAGNETIC TONE. DECIDED TO HONOR THE MAG NAIL RATHER THAN CREATE A PIN CUSHION



APRIL 2024  
FOUND 5/8" REBAR 12" DEEP FROM COUNTY ENGINEER TIES.

I hereby certify that this land surveying document was prepared and the related survey work was performed by me or under my direct personal supervision and that I am a duly licensed Professional Land Surveyor under the laws of the State of Iowa.



*Bobby J. Maddaleno* 4-26-24  
Bobby J. Maddaleno, P.L.S. Date  
License number: 19960  
My license renewal date is December 31, 2025

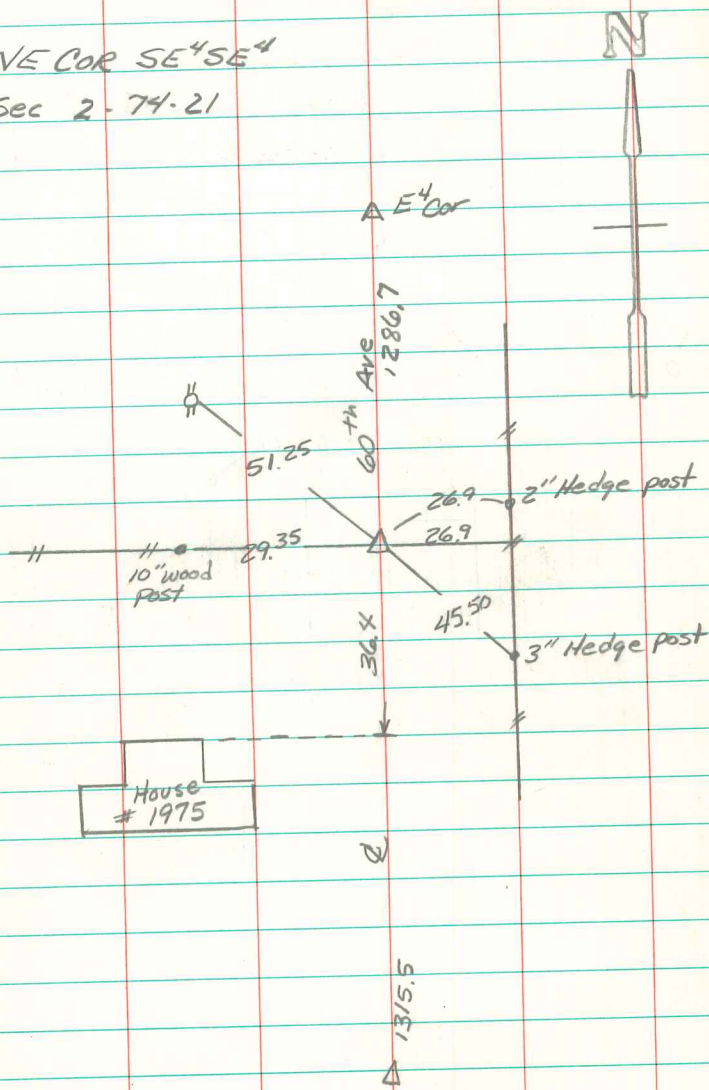
LIST CORNERS TO BE INDEXED

CORNERS	SECTION	TOWNSHIP	RANGE
NW COR SW-SW	1	74	21
SOUTH 1/4	1	74	21

*fd 10/22/24 - Ret Garden Env.*

NE COR SE<sup>4</sup> SE<sup>4</sup>

Sec 2-74-21



Found 5/8" iron pin on line between E<sup>4</sup> Cor. & SE Cor  
& in line w/ property fence line West. Abbie Davis 8/4/02