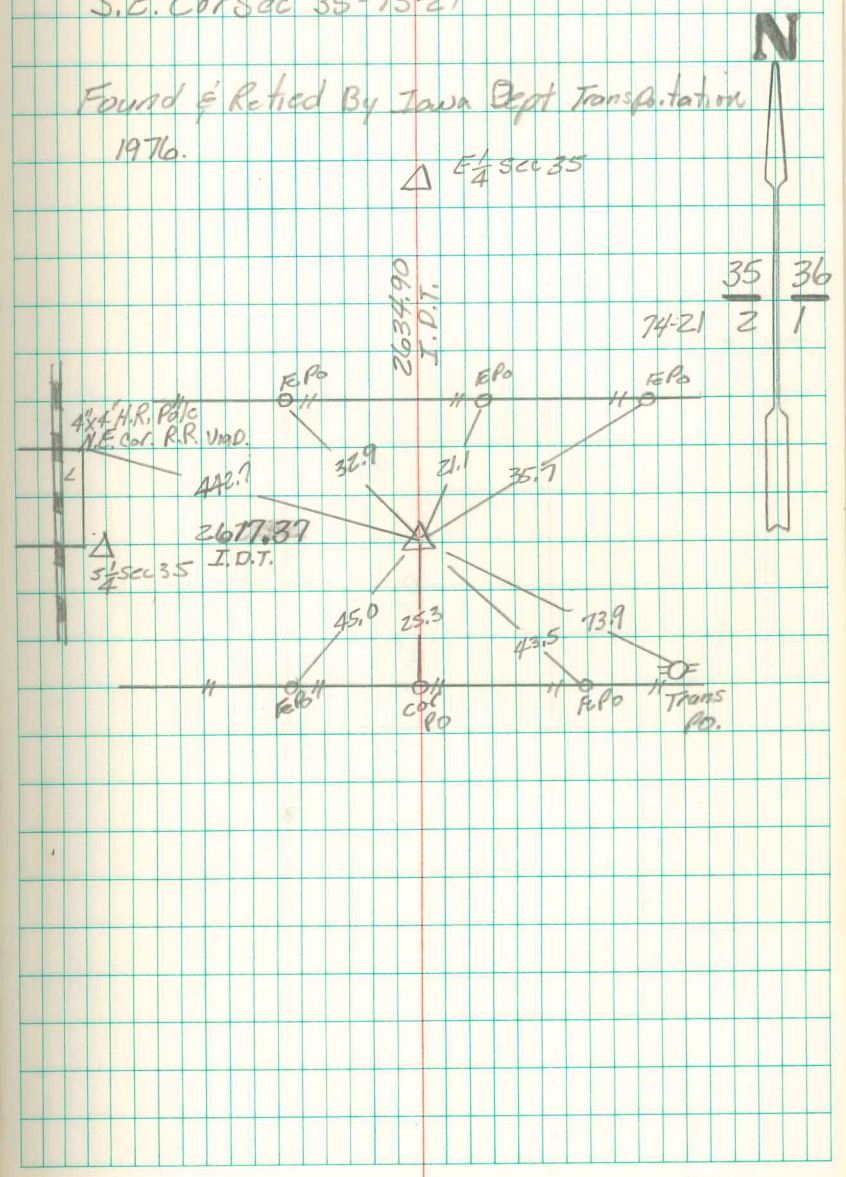


S.E. Cor Sec 35-75-21

Found & Retied By Iowa Dept Transportation
1976.



Found sandstone 6"x4"x4" and 1-1/2"
Horse shoe TIE.

set C.M. over 1-1/2" Tile and
Placed stone on top C.M.

N.E. Cor. Sec 2-74-21

set 5-1-40

Notes by J. Wignall

106.5
10 Line w X Nails
Plain Header
3/16 To Jamb

