

AT Witness Car Found 2-2"
Horse Shoe Tile

Lowered 1-2" Watkins Tile at
Witness Corner and Set C.M.
Tile on END.

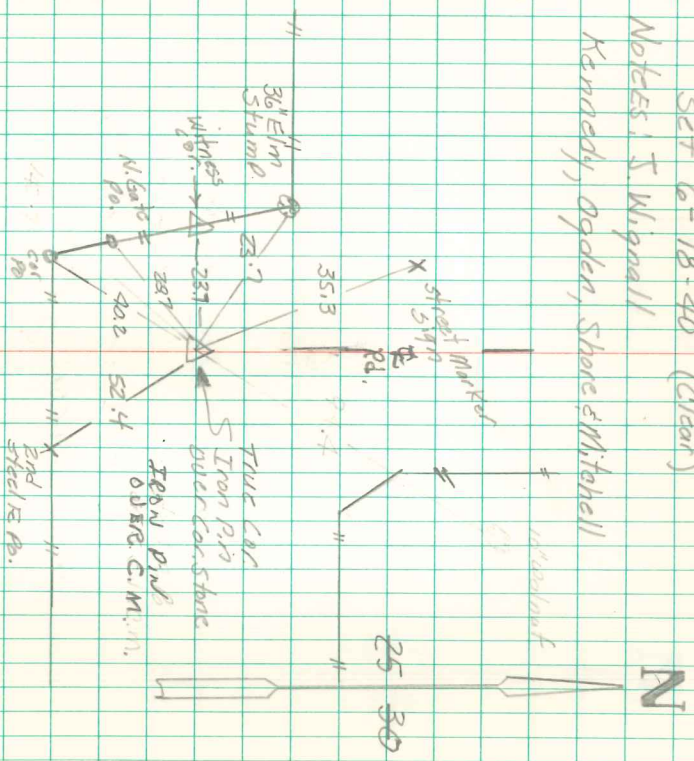
AT TRUE Corner 23' East of
Witness Corner, Placed C.M.
over 1-2" Tile on END, and
Placed Granit Root on Top C.M.

W 1/2 Cor Sec 30-74-21

Set 6-18-40 (Clear)

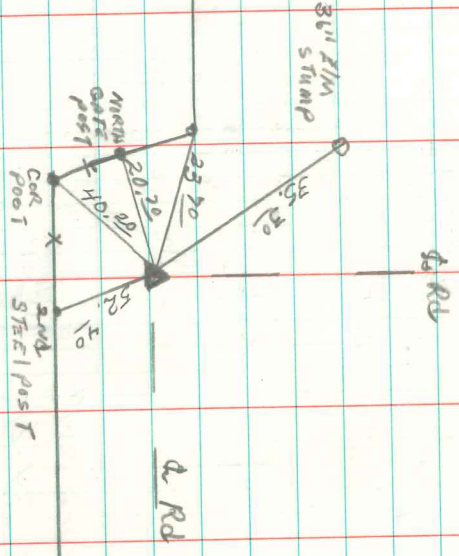
Notes: T. Wipull

Kennedy, Ogden, Shore & Mitchell



Ret'd by Dale Davis
11 May 1993

W⁴ COR. SEC 30-74-21



RETIRED MAY 11, 1990
ABIE DAVIS