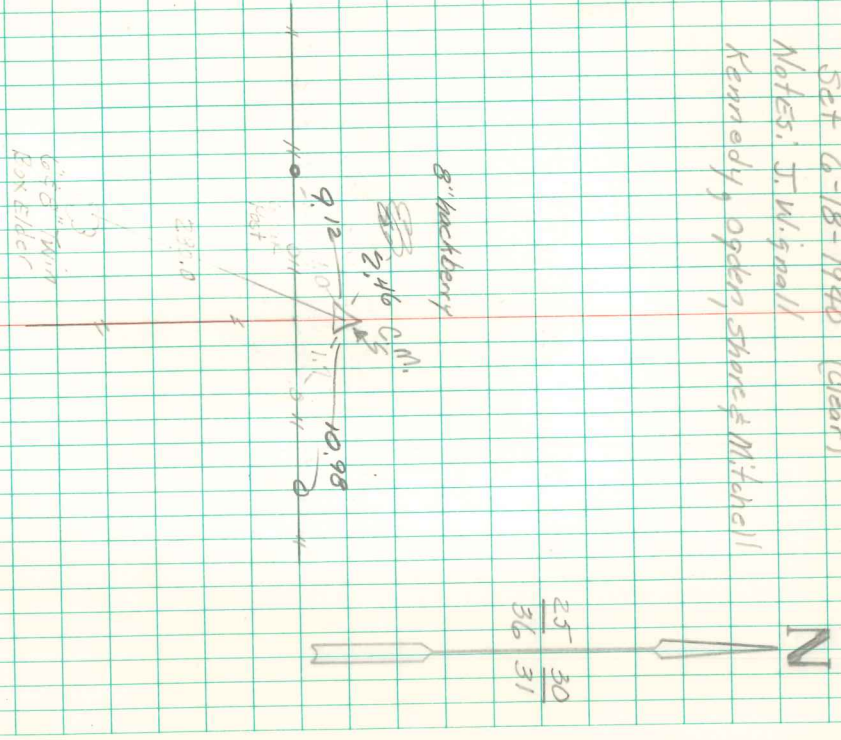


Found Sandstone 14" x 9" x 5"
 Over Granit Rock 18" x 14" x 10"

Pumbed and set C.M. Put
 Granit Rock on North side C.M.
 Sandstone on Top C.M. Paint
 Above surface. C.M. 12" Deep

N.W. Cor Sec. 31-74-21
 Set 6-18-1940 (Clear)
 Notes: J. W. Small
 Kennedy, Ogden, Stone & Mitchell



Found CM, set 5/8" rebar
 w/cap # 7995 on east side.
 Brian Morley 8/8/07