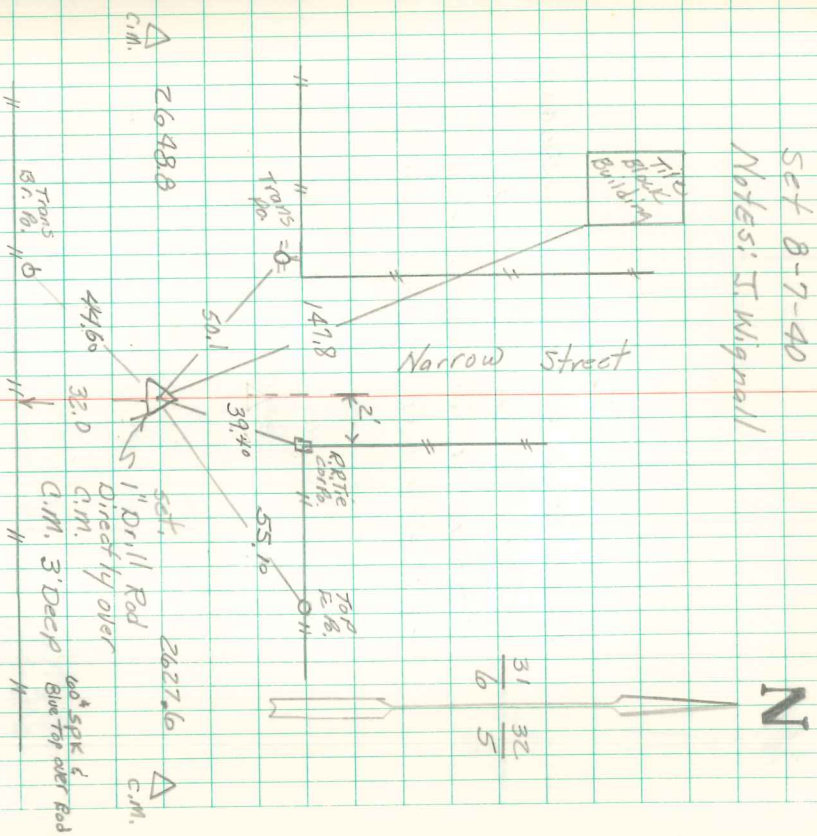


Dug hole 6' wide and 18" deep
 Across Road and Found No Evidence
 or Stone. Established cor by
 presumptive evidence and
 producing line from a.m. $\frac{1}{2}$ mi East.

set C.M. over coal Crockery and
 broken Tile top of C.M. 18" Deep

S.E. Cor Sec 31-74-21
 SET 8-7-40
 Notes: I Wignell



Ratified
 4-27-67
 Moll, & Cameron
 5/5/92 Able Davis