

walter mason stated stone at  
 this corner was above surface  
 & moved with Road dragging, was  
 located in center of North & South  
 Road, in line with Fences West.

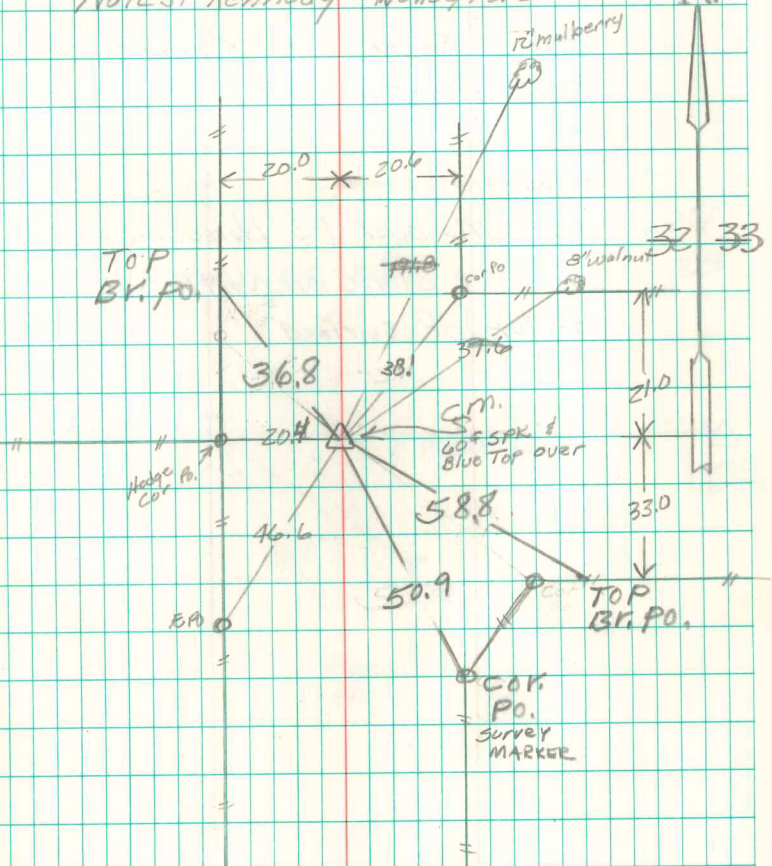
Restablished on old Fence Lines

set c.m. over 1-2" Horse shoe  
 Tile, Put a stone 10"x8"x6" over  
 Top c.m.

E 1/4 Cor sec 32-74-21

Set Aug-4-1941

Notes: Kennedy - Walls & Ford



Found Aug 10, 1988  
 By Gerdert Eng.

Retied 11/6/07