

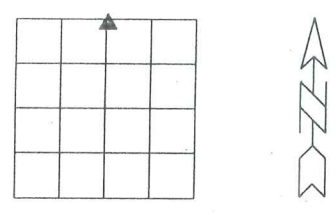
UNITED STATES PUBLIC LAND SURVEY CORNER CERTIFICATE

OF

Land survey Monuments situated in Section 32, Township 74 N, Range 21 W, of the Fifth Principal Meridian, Marion County, Iowa.

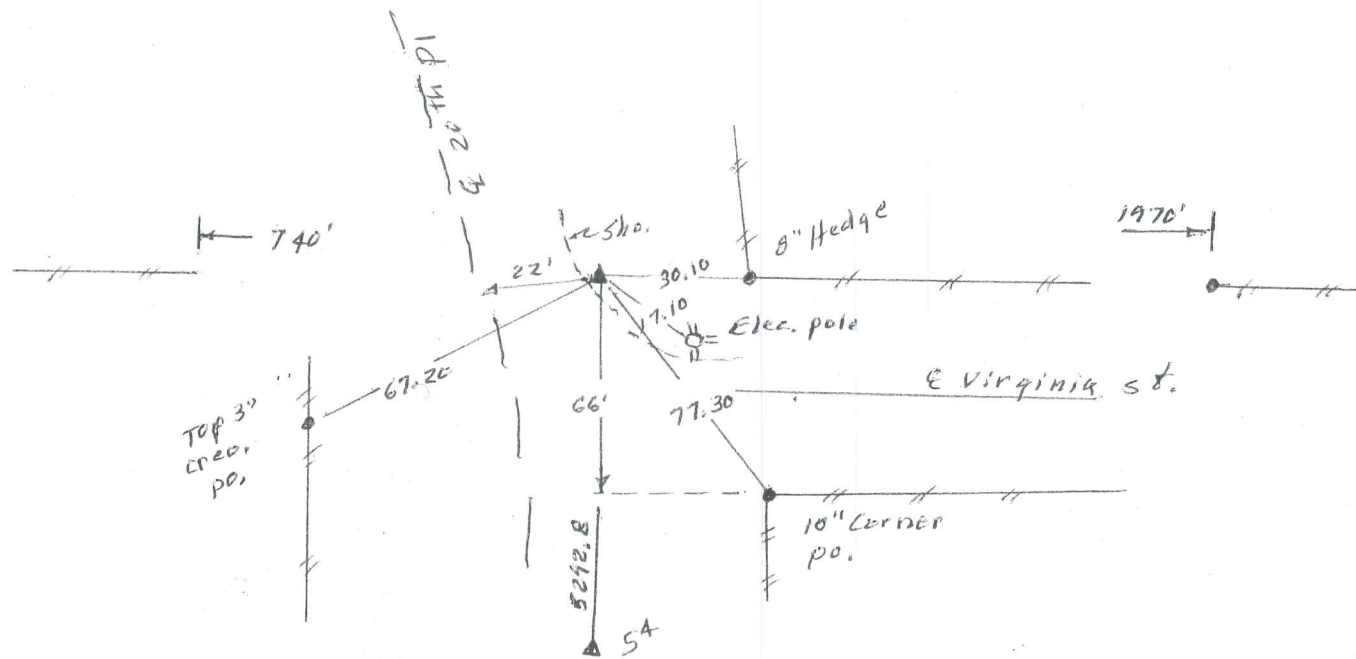
Previously recorded in N/A (book, page, document number, etc.) in County Recorders Office.
 Show reason for preparing this certificate, the evidence and detailed procedures used in establishing the corner positions and monumentation found or placed.

Monument Description and Remarks: Corner obliterated by road constr. in 1970's & Extended line N. fr. 5th Corner thru a stone at an end post of E-W fence that was 2646.1' north of 5th to intersect an E-W fence. Total dist. was 5292.8' set 1" hollow axle 30" long w/cap about 2' off shoulder.



PLAN - VIEW

(Show a minimum of three reference ties to durable physical objects, relevant monuments and physical conditions that will enable recovery of the corner.)

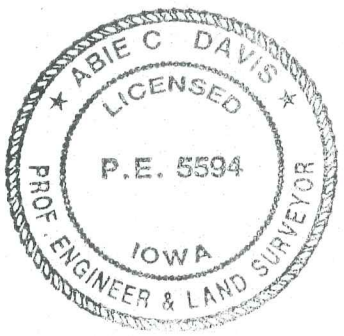


I hereby certify that the survey work was completed and this land surveying document was prepared by me or under my direct personal supervision and that I am a duly licensed land surveyor under the laws of the state of Iowa

Signature: Abie C. Davis
 Abie C. Davis, P.E. & L.S.
 Date: 3/14/15 Reg. No. 5594
 My license renewal date is December 31, 2015

List Corners to be Indexed			
Corners	Section	Twp	Range
N 4	32	74 N	21 W

SEAL



Established corner
set C.M. and placed Broken
Crockery at its base

Granit Rock 36" x 24" x 24" Top C.M.

N¹/₄ Cor. Sec 32-74-21

Set 8-7-40

Notes: J. Wignell

39

