

N 1/4 Cor Sec 33-74-21

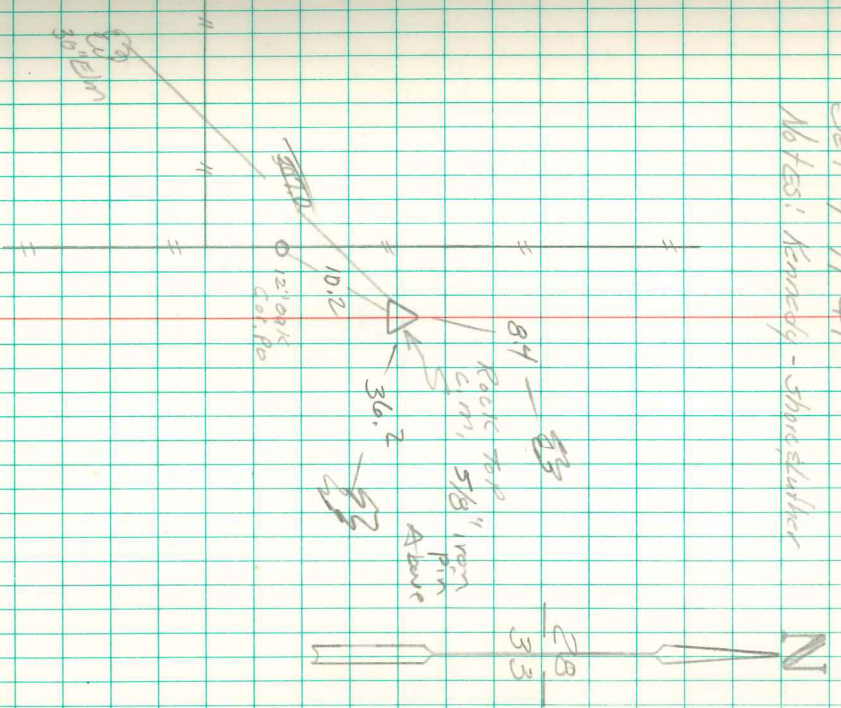
Set 9-11-41

No Test; Kennedy - Shroslaker

Found 2. Granite Rocks one
14x11x6 one 12x9x5" & several
small stones.

Set Man over a piece of 2" Round
Tie 6' long,
One Rock on Top C.M. striking
out above surface, the Rest of
Rocks around Man.

307.0' NE. of X Nails in 30" Elm Tree
10.2' N.E. " " " 12" oak Cor R.



Revised 12/4/97