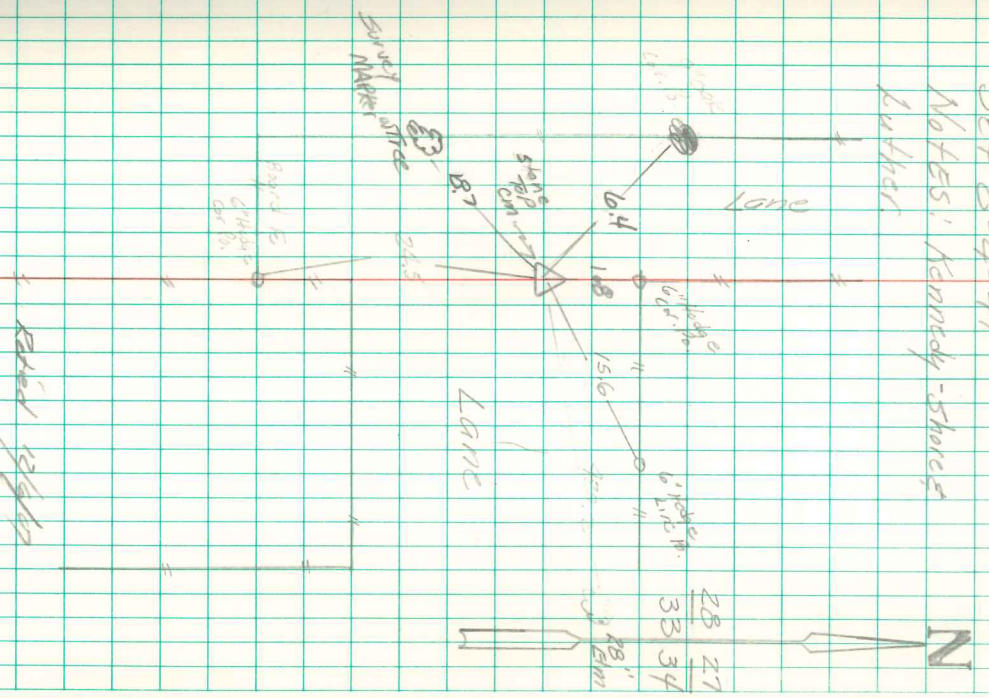


N. E. Cor Sec 33-74-21

Set 8-4-41

Notes: Kennedy-Shores
Luhrer



Found Sandstone 15x7x6"
over 2-2" Horseshoe Tile.

Right where we set mon.

Set C.M. over 1-2" Horseshoe Tile

Lowered in Place,

Put stone on top C.M. stone

Level with top of ground.

18.2' S.E. of X Nails in 4" oak cor B.

156' SW " " " " 6" Hedge Line Ro.

24.5' N " " " " 9" " Cor B.

1.8" SW " " " " 6" Hedge cor B.