

UNITED STATES PUBLIC LAND SURVEY CORNER CERTIFICATE

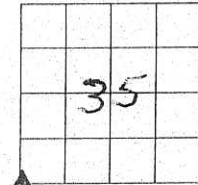
OF

Land survey Monuments situated in Section 35, Township 74 N, Range 21 W, of the Fifth Principal Meridian, Marion County, Iowa.

Previously recorded in N/A in County Recorders Office.

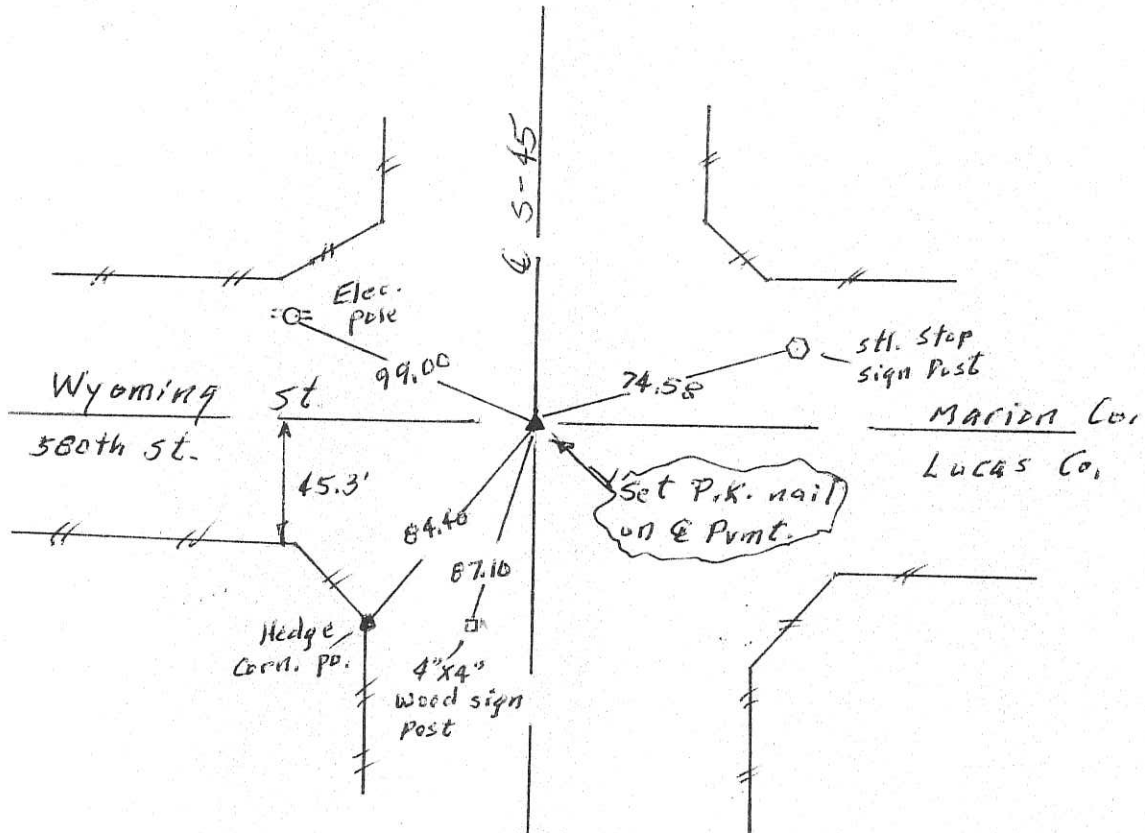
Show reason for preparing this certificate, the evidence and detailed procedures used in establishing the corner positions and monumentation found or placed

Monument Description and Remarks: Previous PK nail was paved over. Set new PK nail from old ties at Co. Engr. notes. set out new ties



PLAN - VIEW

(Show a minimum of three reference ties to durable physical objects, relevant monuments and physical conditions that will enable recovery of the corner.)



I hereby certify that the survey work was completed and this land surveying document was prepared by me or under my direct personal supervision and that I am a duly licensed land surveyor under the laws of the state of Iowa

Signature: Abie C. Davis

Abie C. Davis, P.E. & L.S.

Date: 12/17/18 Reg. No. 5594

My license renewal date is December 31, 2019

SEAL



List Corners to be Indexed			
Corners	Section	Twp	Range
SW	35	74 N	21 W

Found stone and Iron Rod
 $\frac{1}{2}$ " x 12"

set C.M. over $1\frac{1}{2}$ " Tile

S.E. Cor Sec. 34-74-21

49

set 4-16-40

Notes: J. Wignall Thomas
 Wells, Crozier & Butcher

