

Found 6"x8"x12" Granite stone
1- 3" Circ. tile lowered tile.

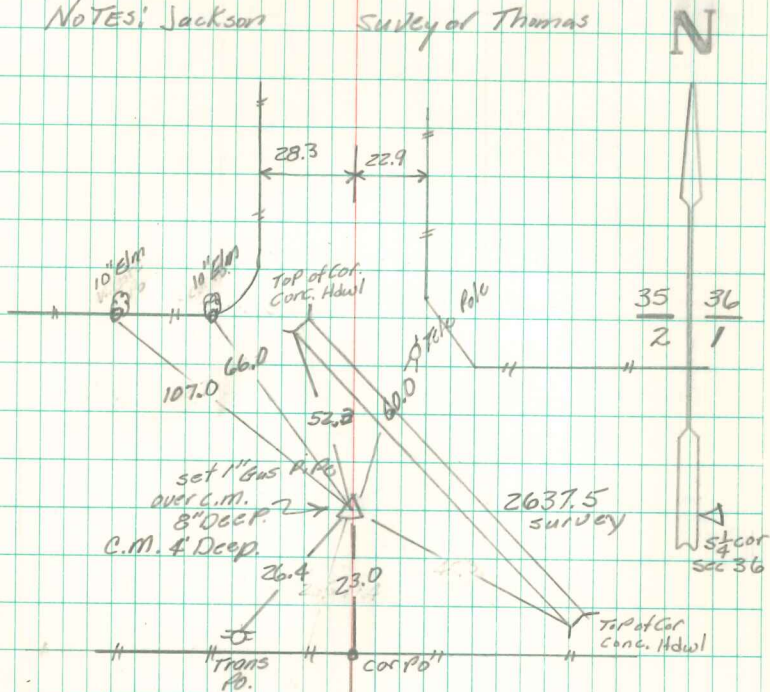
set c.m. stone on North side
c.m.

S.W. Cor. Sec 36 - 74-21

14

set April 16, 1940 P. Cloudy

NOTES: Jackson Survey of Thomas



Lucas County

Found & Retied
Oct-3-1977
By Mall, Galvin - Pregon
& Stone