

Found small 8x6x2" Sandstone  
Duct 2-2" Horse shoe Tile

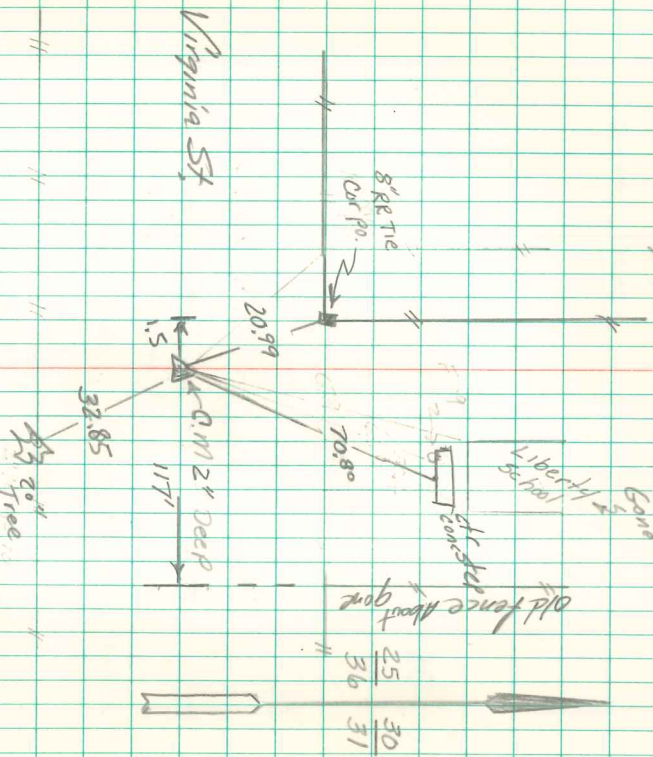
Lowered 1-2' Tile in its original  
up-Right Pos. and set 0.M.  
stone top cm.

0.M. 10" Deep

N.E. Cor. Sec. 36-74-21

Set 6-10-40

Notes: Wagon 1/2 Wells



Found cm w/ top broken off

About 2' deep, set 5/8" iron pin

on N. side, spk w/ chaser on S.  
side, and a small "zinch" piece

of tile on W. side.

Tom pryor

Retied 8/21/65

Found & Retied

Wagon 1/2 Ragon

Means, Hatch