

Found small Sand Stone
 4"x6"x7" on Top 1-2" Horse Shoe Tile
 Set C.M. on Top Tile
 Placed Sandstone 3"x12"x12" on
 Top C.M. Exposed.

N.E. Cor. Sec. 3-74-21

18

Set May 1-1900 (Noddy Stone Flurries)

Notes: Jackson

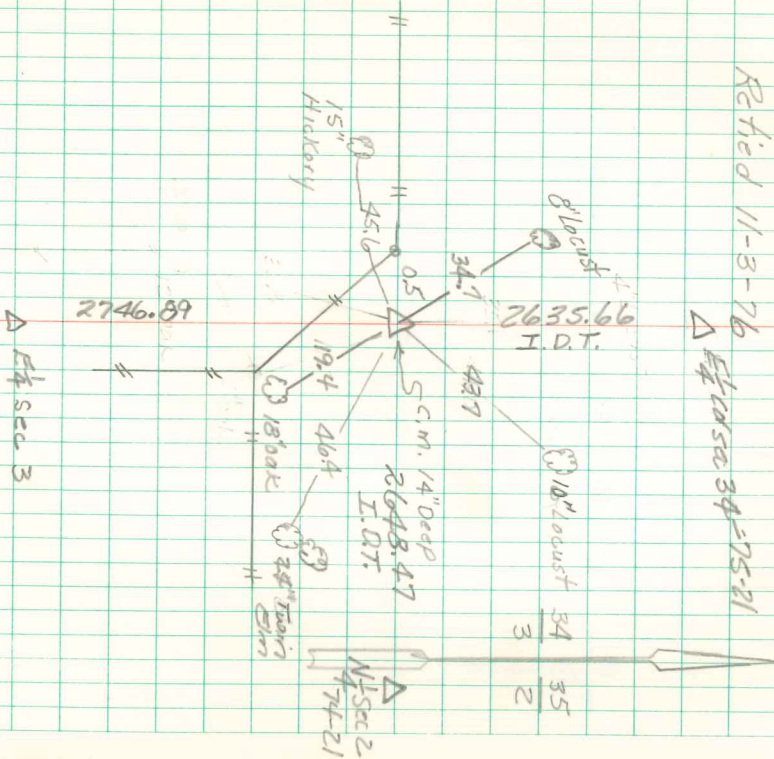
Thomas

Found

Retied 11-3-76

△ E. Casca 34-75-21

N

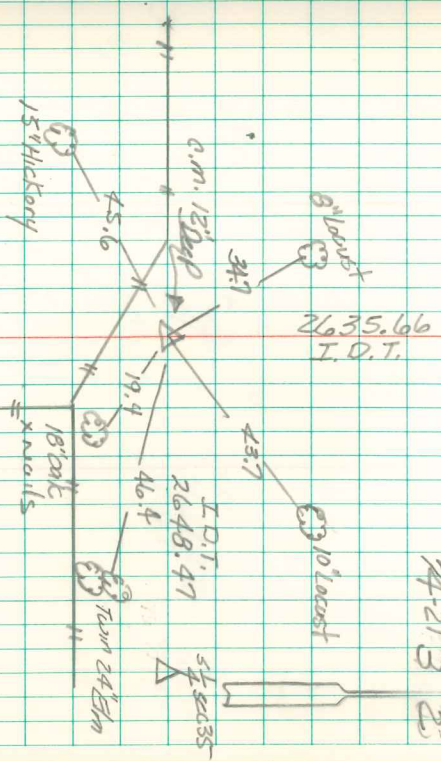


SW. Cor Sec 35-75-21

Found & Ret'd by Town Dept Trans.
1976-

△ NW Cor Sec 35

75-21	34	35
24-21	3	25



FED CONC MOUNT WITH BRASS CAP
12" DEEP