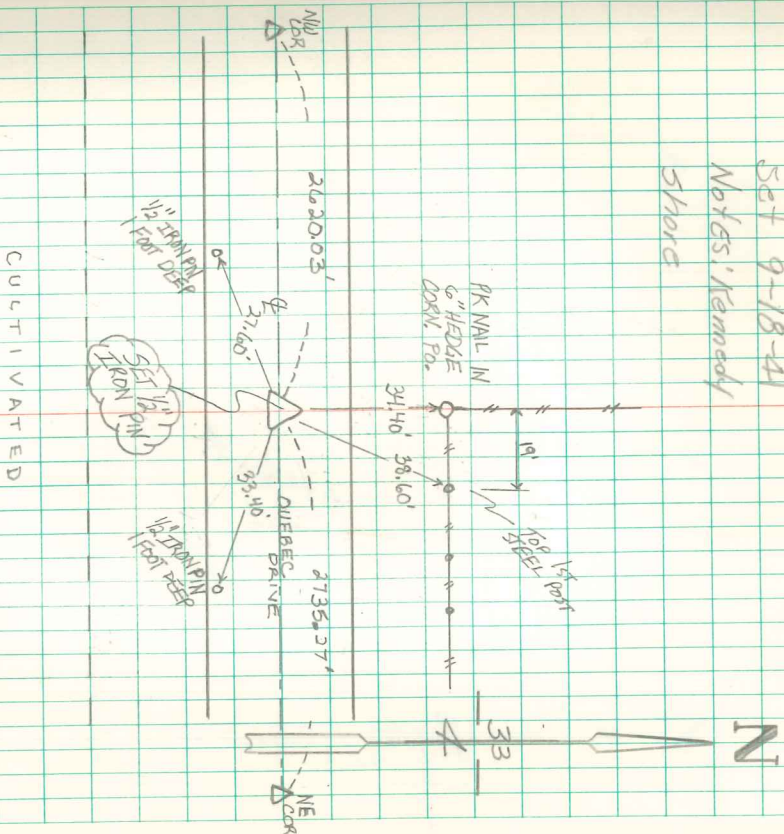


N. 1/4 Cor. Sec 4-74-21
Set 9-18-41
Notes: Kennedy
Shord



CULTIVATED

FOUND & RETRIEVED
1/25/09
D. MCKEAN &
B. HATCH

Dug several holes up & down road down below natural ground. & found nothing

Restablished - Corner

Set Mon. on some pieces of Arctery directly on line Between stones east & west on direct line from stones. AT 5/4 cor. & center Sec 4.

Top Mon 14" UNDER Top Surface.

9/25/09 ALL OLD TIES WERE GONE. FOUND 4"x4" BRASS CARPED MONUMENT 6" DEEP ON LINE FROM NW CORNER & NE CORNER. SET KON PIN ON NORTH SIDE OF MONUMENT & SET NEW TIES.