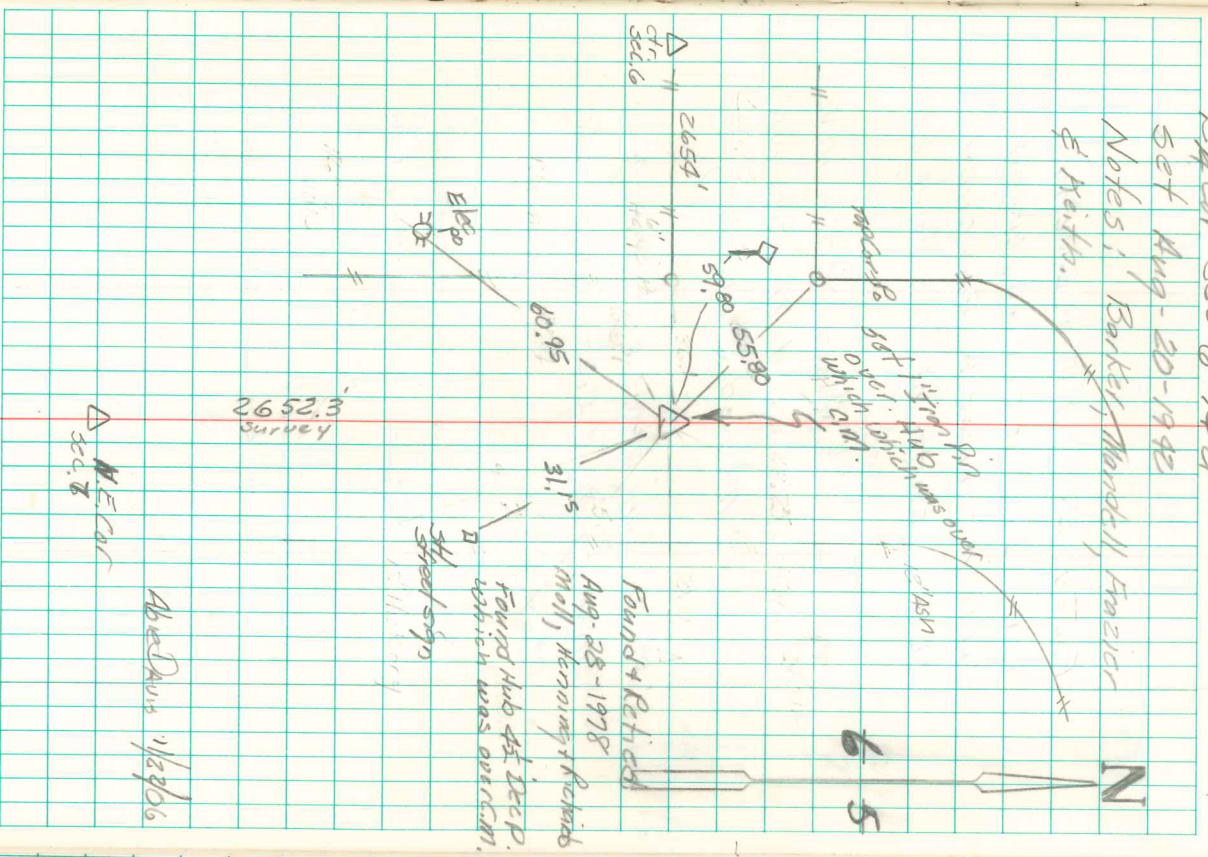


Found 6"x10"x16" Gray sandstone
 over 2-3" Horse shoe tile in
 vertical position as set by
 N. J. Watkins - 1881

Left bottom 2" Horse shoe tile
 in its original position, set c.m.
 over tile with top of c.m. 1 foot
 below surface of Road. Placed
 6"x10"x16" sandstone on S.S. side
 of c.m. Creo stake over c.m.

Eng Car Sec 6-74-21
 Set Aug-20-1942
 Notes: Barkley, Mandell, Fowler
 & Araith.



NE Car
 Sec. 8

Abner Davis 1/22/06