

KAREN SCHWANEBECK, RECORDER
 MARION COUNTY IOWA



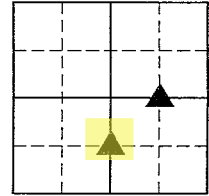
GARDEN & ASSOC.

P.O. Box 451, Oskaloosa, Iowa 52577-0451 Phone: (641)672-2526

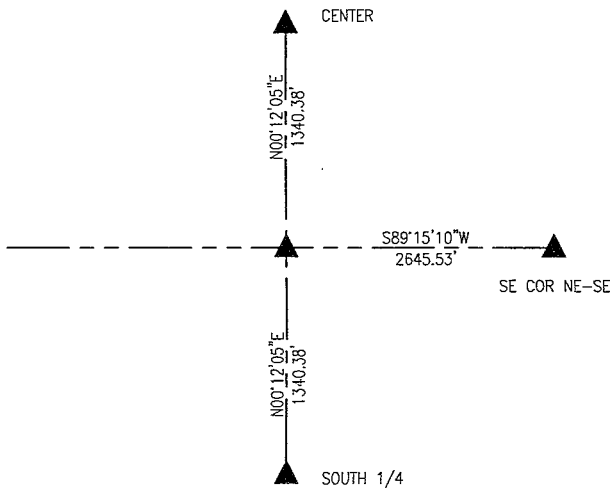
UNITED STATES PUBLIC LAND SURVEY CORNER CERTIFICATE

OF

Land Survey Monuments situated in Section 7, Township 74, Range 21, of the Fifth Principal Meridian, MARION County, Iowa. Previously recorded in NO CERTIFICATE OF RECORD in County Recorder's Office. Monument Description and Remarks: SEE BELOW

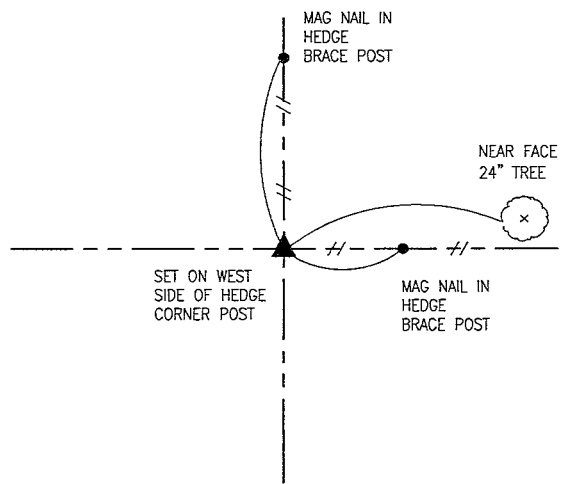


SW COR NW-SE



MARCH 2021
 CORNER FALLS IN CULTIVATED FIELD. SET 5/8" X 30" REBAR WITH CAP #19960 15" DEEP MIDWAY ONLINE BETWEEN THE SOUTH 1/4 AND CENTER OF SECTION. THERE ARE NO DURABLE TIES IN THE VICINITY OF THE CORNER.

NE COR NW-SE



MARCH 2021
 SET 5/8" X 30" REBAR WITH CAP #19960 AT LONG STANDING CORNER POST.

I hereby certify that this land surveying document was prepared and the related survey work was performed by me or under my direct personal supervision and that I am a duly licensed Professional Land Surveyor under the laws of the State of Iowa.

Bobby J. Maddaleno

3-16-21

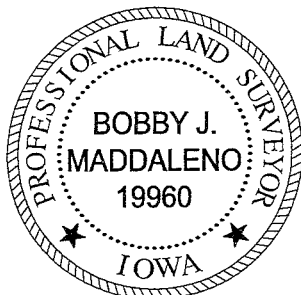
Bobby J. Maddaleno, P.L.S.

Date

License number: 19960

My license renewal date is December 31, 2021

SEAL



List Corners to be Indexed			
Corners	Section	Township	Range
SW COR NW-SE	7	74	21
NE COR NW-SE	7	74	21

RJ 1700 CK - Ret Garden & Assoc.