

Prepared by: Abie C. Davis, P.E. & L.S., 1428 Oregon St., Knoxville, Iowa 50138 Phone: (515) 842-5863

UNITED STATES PUBLIC LAND SURVEY CORNER CERTIFICATE

SLSI9-94

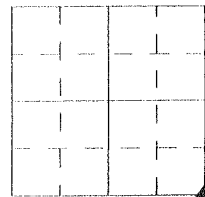
OF

Land survey Monuments situated in Section 5, Township 74N, Range 21W, of the Fifth Principal Meridian, Marion County, Iowa.

Previously recorded in N/A in County Recorders Office.

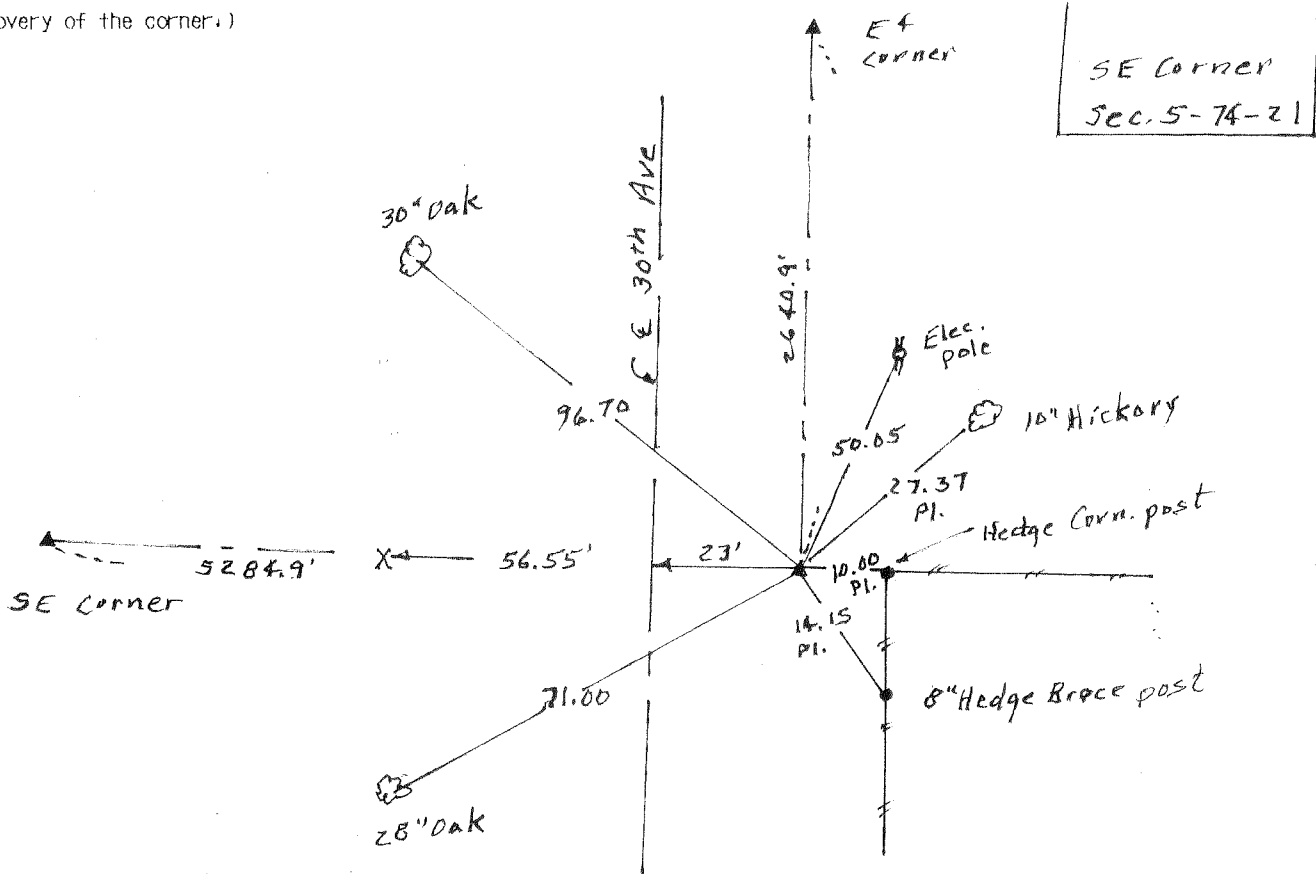
Show reason for preparing this certificate, the evidence and detailed procedures used in establishing the corner positions and monumentation found or placed

Monument Description and Remarks: Found C.M. 12" deep in the bottom of the East grader ditch. Set 1" X 30" steel axle w/cap on W. side C.M.



PLAN - VIEW

(Show a minimum of three reference ties to durable physical objects, relevant monuments and physical conditions that will enable recovery of the corner.)



I hereby certify that the survey work was completed and this land surveying document was prepared by me or under my direct personal supervision and that I am a duly licensed land surveyor under the laws of the state of Iowa

Signature: Abie C. Davis
Abie C. Davis, P.E. & L.S.

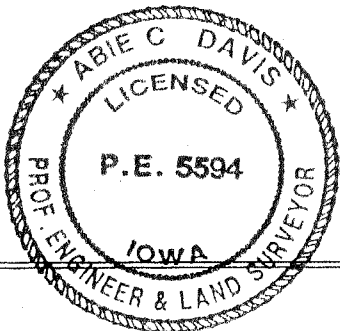
Date: 5/13/13 Reg. No. 5594

My license renewal date is December 31, 2013

List Corners to be Indexed

Corners	Section	Twp	Range
SE	5	74N	21W

SEAL



N.E. 101 SEC. 8-74-21

