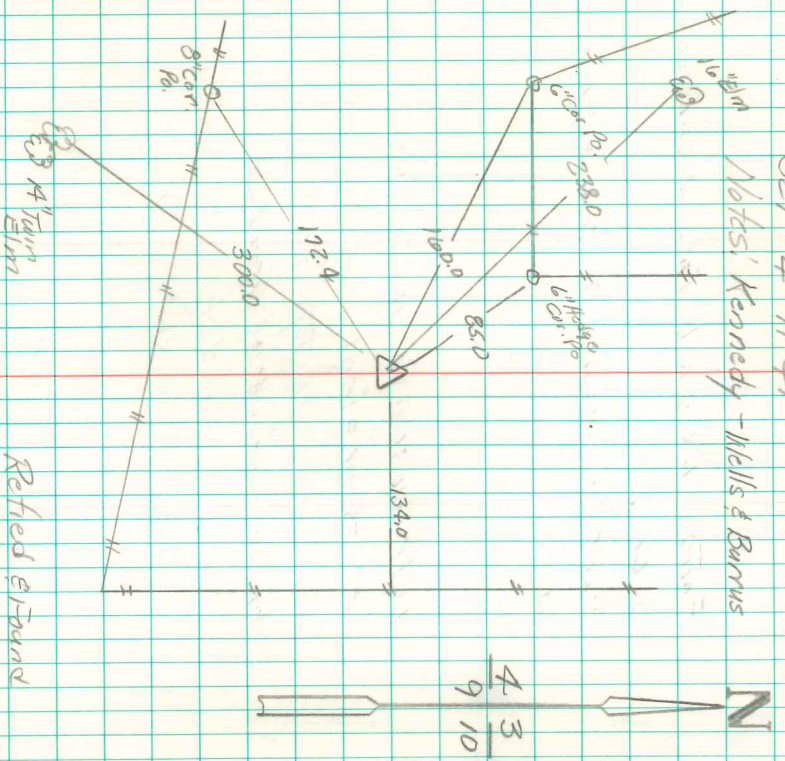


Found 3" tile set by former survey by
 Co. ENG.
 Found Witness Tile 5.0' West of True
 Corner.

Set c.m. over 1 1/2" Horse Shoe Tile
 standing on end.

Top c.m. 12" Below surface

N.E. Cor Sec 9-74-21
 Set 4-11-41
 Notes Kennedy - Wells & Barnes



Ret'd Edward
 April 5-1949
 By Winslow & Ma W