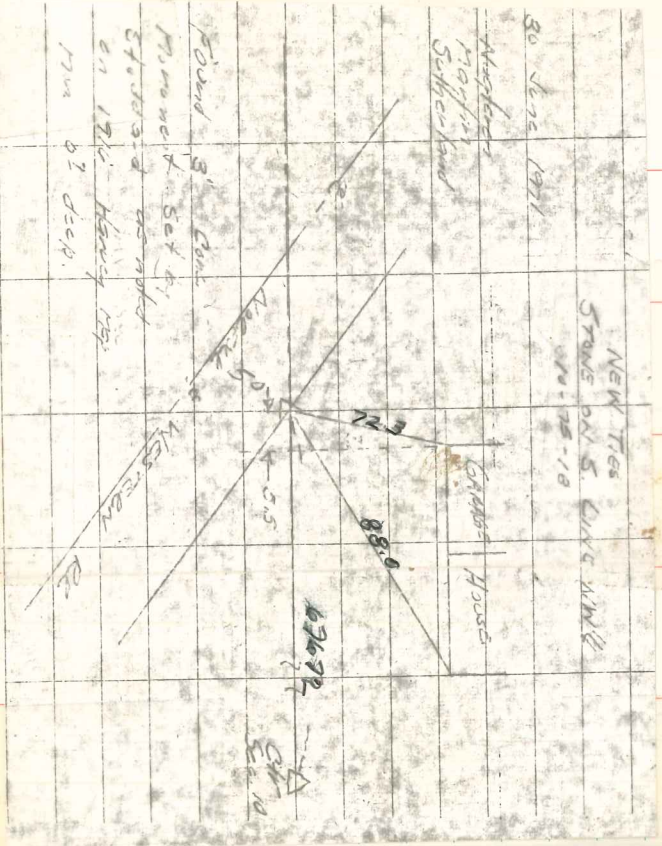
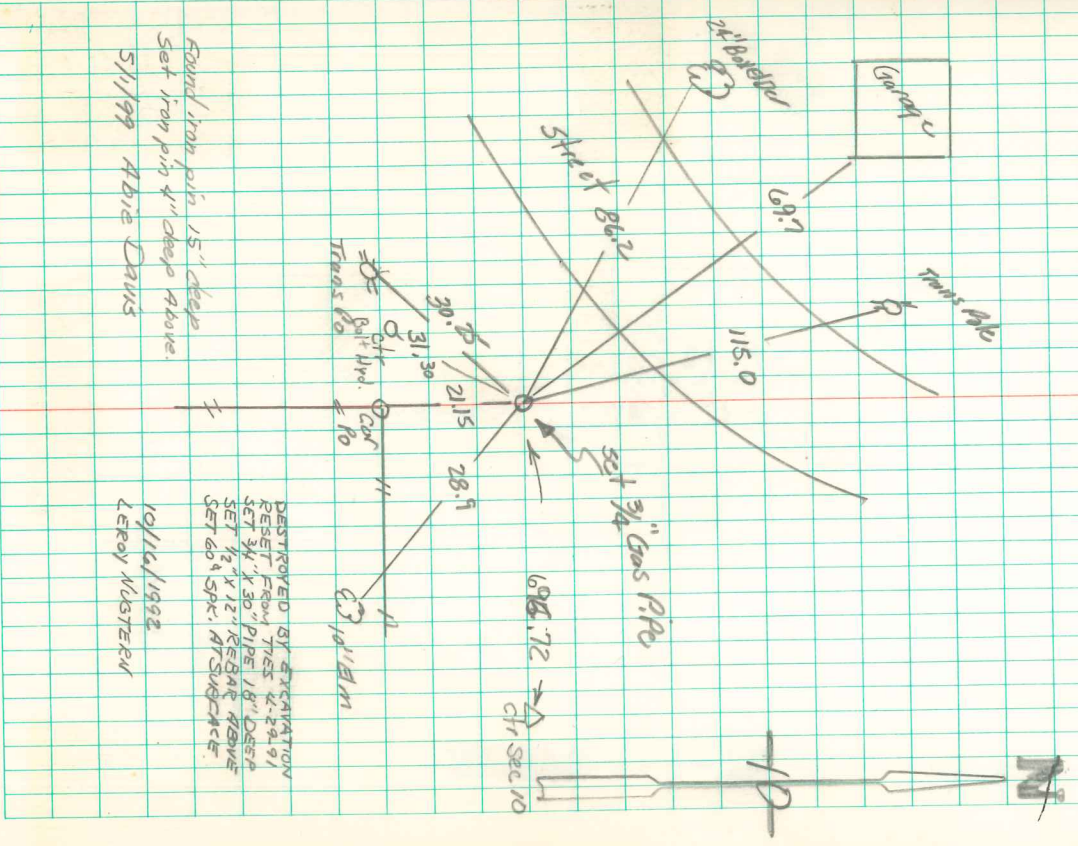


~~NE 1/4~~ 0
 NE 1/4 SW 1/4 5-10-75-18



SE. Cor SW 1/4 NW 1/4 of Sec 10-75-18
 Corner Reestablished by Town Dept of Transportation
 DN Feb 25-1977 - By Doreen B. Mennen R.L.S.



Found iron pin 15" deep
 Set iron pin 4" deep above
 5/1/99 ABIE DAVIS

DESTROYED BY EXCAVATION
 RESET FROM TIES 4-29-91
 SET 3/4" X 30" PIPE 18" DEEP
 SET 1/2" X 12" REBAR ABOVE
 SET 60" SPI. AT SURFACE

10/16/1998
 LEROY MUSTERN