



Document 20-5696

Book 2020 Page 5696 Type CORNR Pages 1
Date 10/02/2020 Time 11:13 AM
Rec Amt \$7.00

KAREN SCHWANEBECK, RECORDER
MARION COUNTY IOWA

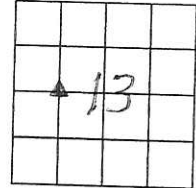
Prepared by Abie C. Davis, P.E. & L.S., 1428 Oregon St., Knoxville, IA 50138 (641) 842-5863

UNITED STATES PUBLIC LAND SURVEY CORNER CERTIFICATE

OF
Land survey Monuments situated in Section 13, Township 75N, Range 18W, of the Fifth Principal Meridian, Marion County, Iowa.

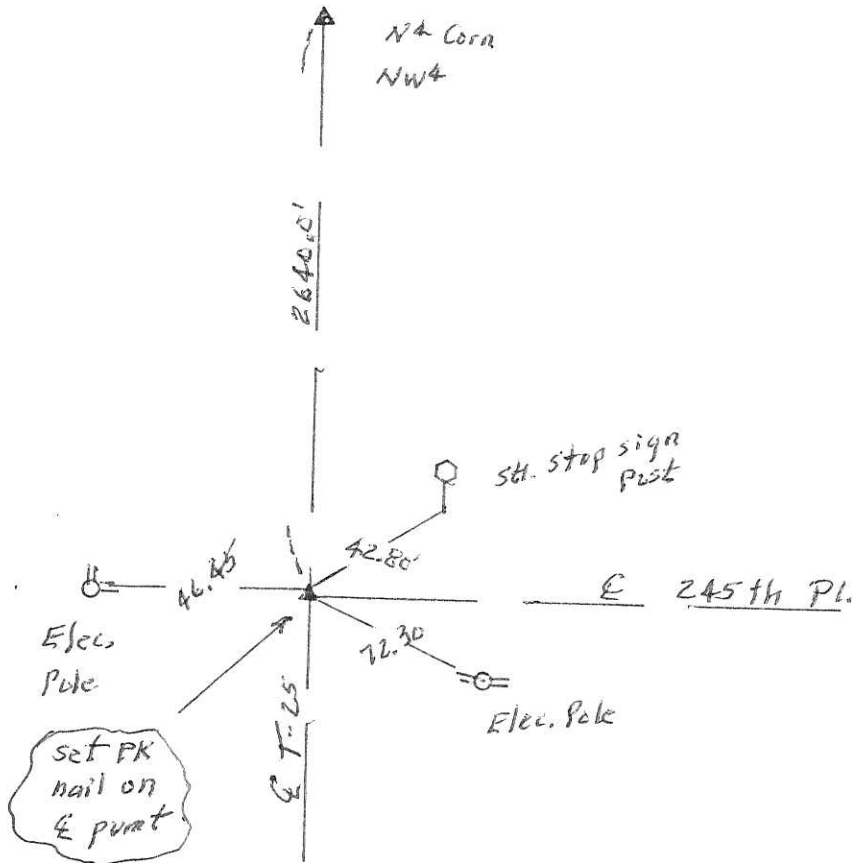
Previously recorded in N/A in County Recorders Office.
Show reason for preparing this certificate, the evidence and detailed procedures used in establishing the corner positions and monumentation found or placed (book, page, document number, etc.)

Monument Description and Remarks: Set corner on E Point T-25 & 245th Place & 2640.0 ft south of N4 Corner of the NW4.



PLAN - VIEW

(Show a minimum of three reference ties to durable physical objects, relevant monuments and physical conditions that will enable recovery of the corner.)



I hereby certify that the survey work was completed and this land surveying document was prepared by me or under my direct personal supervision and that I am a duly licensed land surveyor under the laws of the state of Iowa

Signature: Abie C. Davis
Abie C. Davis, P.E. & L.S.

Date: 10/1/20 Reg. No. 5594

My license renewal date is December 31, 2021

SEAL



List Corners to be Indexed			
Corners	Section	Twp	Range
S4 Corn	13	75N	18W
NW4			

Pd \$700 CASH - Ret Abie Davis