

KAREN SCHWANEBECK, RECORDER
MARION COUNTY IOWA

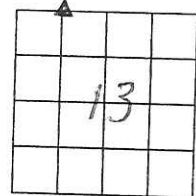
Prepared by Abie C. Davis, P.E. & L.S., 1428 Oregon St., Knoxville, IA 50138 (641) 842-5863

UNITED STATES PUBLIC LAND SURVEY CORNER CERTIFICATE OF

Land survey Monuments situated in Section 13, Township 75N, Range 18W, of the Fifth Principal Meridian, Marion County, Iowa.

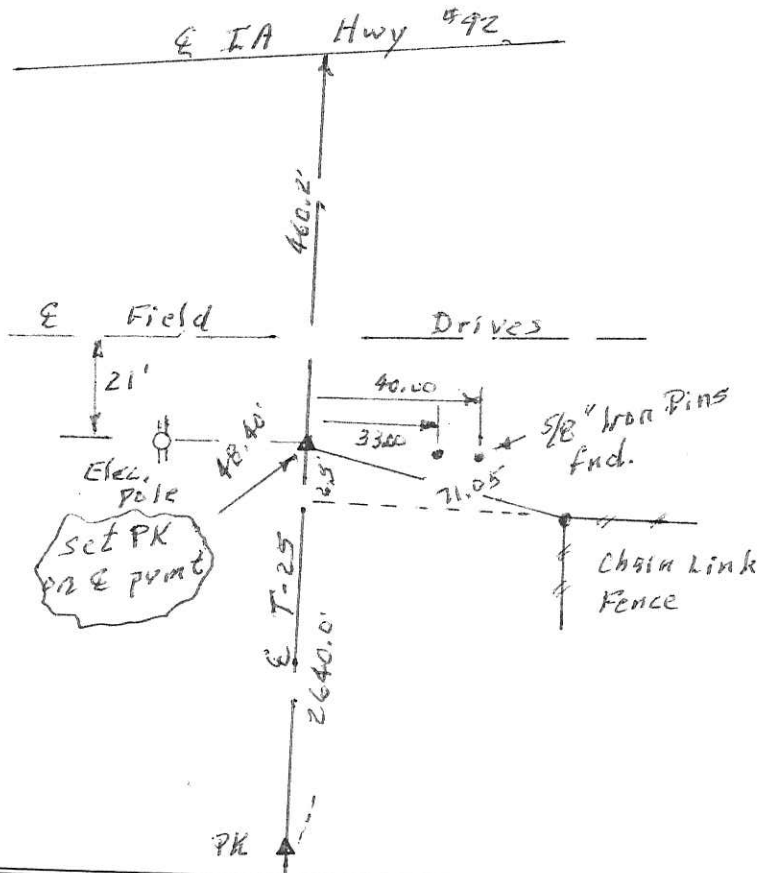
Previously recorded in N/A in County Recorders Office.
(book, page, document number, etc.)
Show reason for preparing this certificate, the evidence and detailed procedures used in establishing the corner positions and monumentation found or placed

Monument Description and Remarks: Set corner from old right-of-way plans and recorded plats. set out new ties.



PLAN - VIEW

(Show a minimum of three reference ties to durable physical objects, relevant monuments and physical conditions that will enable recovery of the corner.)



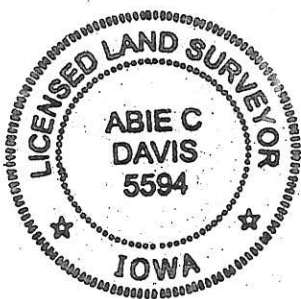
I hereby certify that the survey work was completed and this land surveying document was prepared by me or under my direct personal supervision and that I am a duly licensed land surveyor under the laws of the state of Iowa

Signature: Abie C. Davis

Date: 10/1/20 Abie C. Davis, P.E. & L.S. Reg. No. 5594

My license renewal date is December 31, 2021

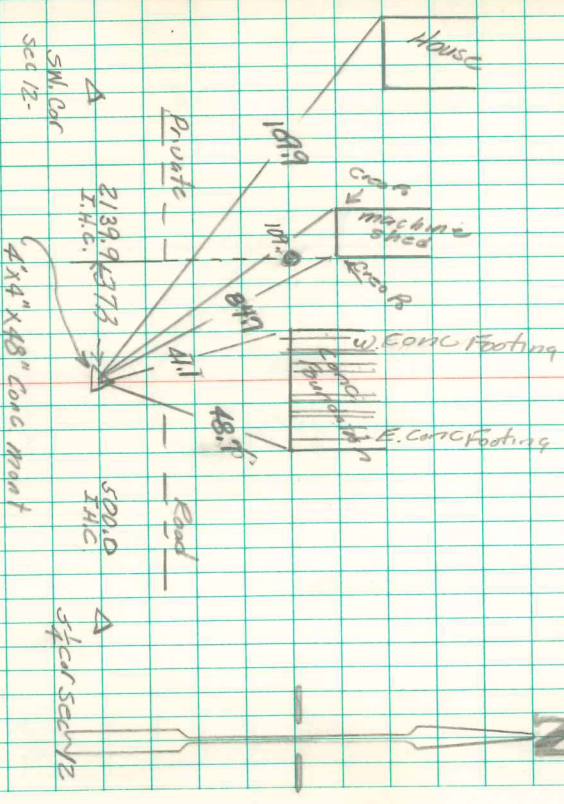
SEAL



List Corners to be Indexed			
Corners	Section	Twp	Range
N4 CORN	13	75N	18W
NW4			

Pd \$7.00 CASH - Ref Abie Davis

Witness Cor for 5' Cor Sec 12-75-18
Set By Iowa Highway Comm.
1975- Set: 4" x 4" x 48" Conc. Pmt



Retired May 29-1979
M.H. PREGOR & ASSOC