

Found 8 limestone, 14"x7"x6"  
and 8"x6"x3" No tile.

Flumbed stone and put 12" of tile  
on end. Set c.m. over it.  
Small stones at base of c.m. and  
larger one on top, point 2" deep  
c.m. 12" deep.

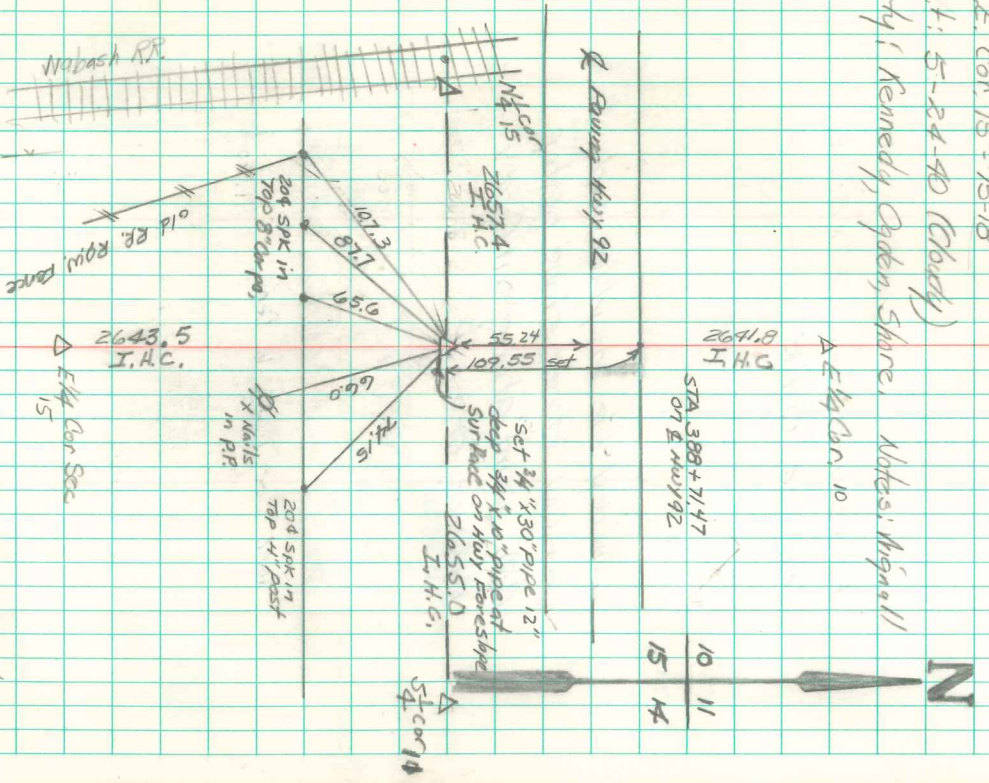
April 2, 1987, Reestablished Corner From 1907  
Highway plans AS constructed,  
April 4 1996 Found 3/4" pipe from 1987 Ties  
Jerry Nisperen.

N.E. Con. 15 + 75-18

Set: 5-24-70 (County)

Party: Kennedy, Opat, Stone, Nobsis, Ingall

AE 4/2/92



Retired Sept, 1983  
by Highway Comm.