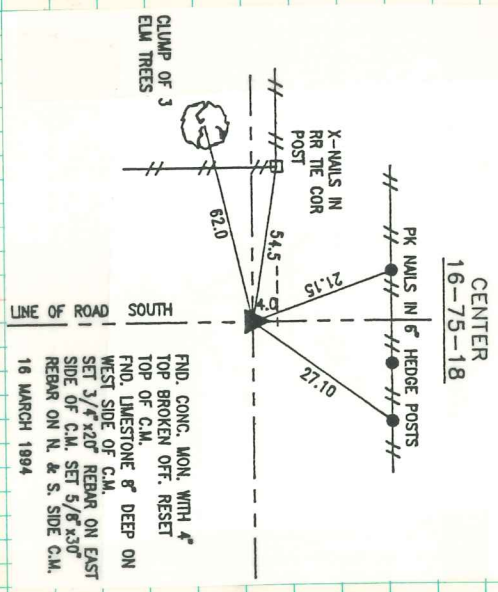


Center Sec. 16-75-18
 Found By Iowa Dept Transportation
 1975-



FND. CONG. MON. WITH 4\" TOP BROKEN OFF. RESET TOP OF C.M.
 FND. LIMESTONE 8\" DEEP ON WEST SIDE OF C.M.
 SET 3/4\" x 20\" REBAR ON EAST SIDE OF C.M. SET 5/8\" x 30\" REBAR ON N. & S. SIDE C.M.
 16 MARCH 1894

RETIRED APRIL 1994
 LEROY WUGTAREN

