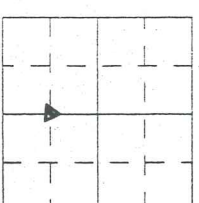


Prepared by: Abie C. Davis, P.E. & L.S., 1428 Oregon St., Knoxville, Iowa 50138 Phone: (515) 842-5863

UNITED STATES PUBLIC LAND SURVEY CORNER CERTIFICATE SL519-9

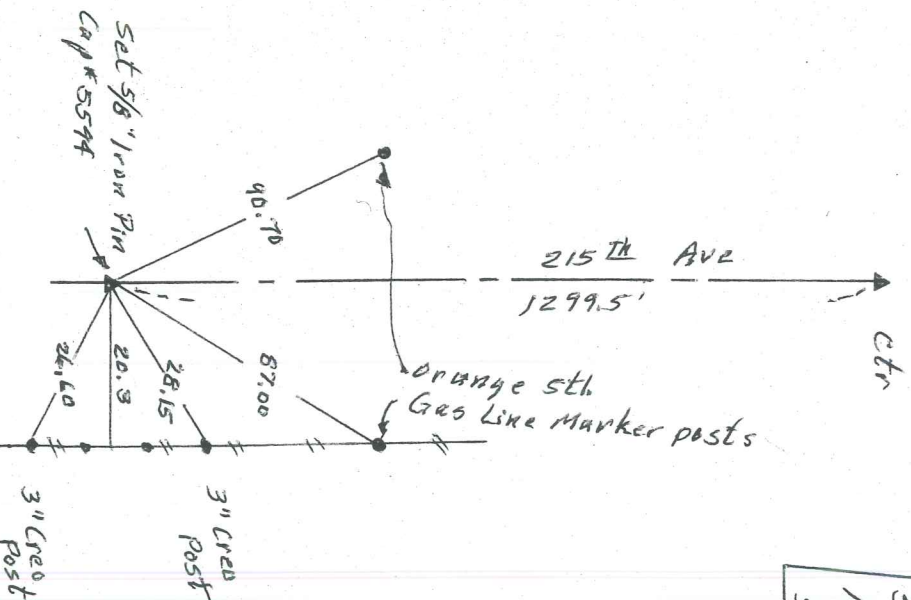
Land survey Monuments situated in Section 16, Township 75N, Range 18W, of the Fifth Principal Meridian, Marion County, Iowa.

Previously recorded in N/A (book, page, document number, etc.) in County Recorders Office.
Show reason for preparing this certificate, the evidence and detailed procedures used in establishing the corner positions and monumentation found or placed
Monument Description and Remarks: Set corner from
references on surveys by L.S. #4521 in 1973



PLAN - VIEW

(Show a minimum of three reference ties to durable physical objects, relevant monuments and physical conditions that will enable recovery of the corner.)



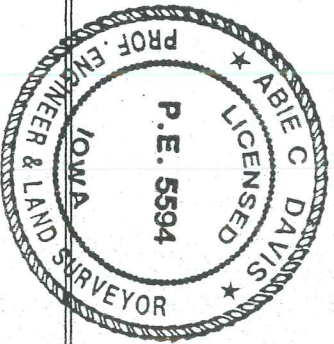
SW Corner
NW 4 SE 4
Sec. 16-75-18

I hereby certify that the survey work was completed and this land surveying document was prepared by me or under my direct personal supervision and that I am a duly licensed land surveyor under the laws of the state of Iowa

Signature: Abie Davis
Abie C. Davis, P.E. & L.S.
Date: 9/2/2014 Reg. No. 5594

My license renewal date is December 31, 2015

SEAL



List Corners to be Indexed

Corners	Section	Twp	Range
SW Corn.	16	75N	18W
NW 4 SE 4			