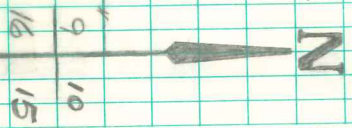


N.E. Cor. 16-75-18
Set: 3-3-41
Kennedy, Shore, Mitchell

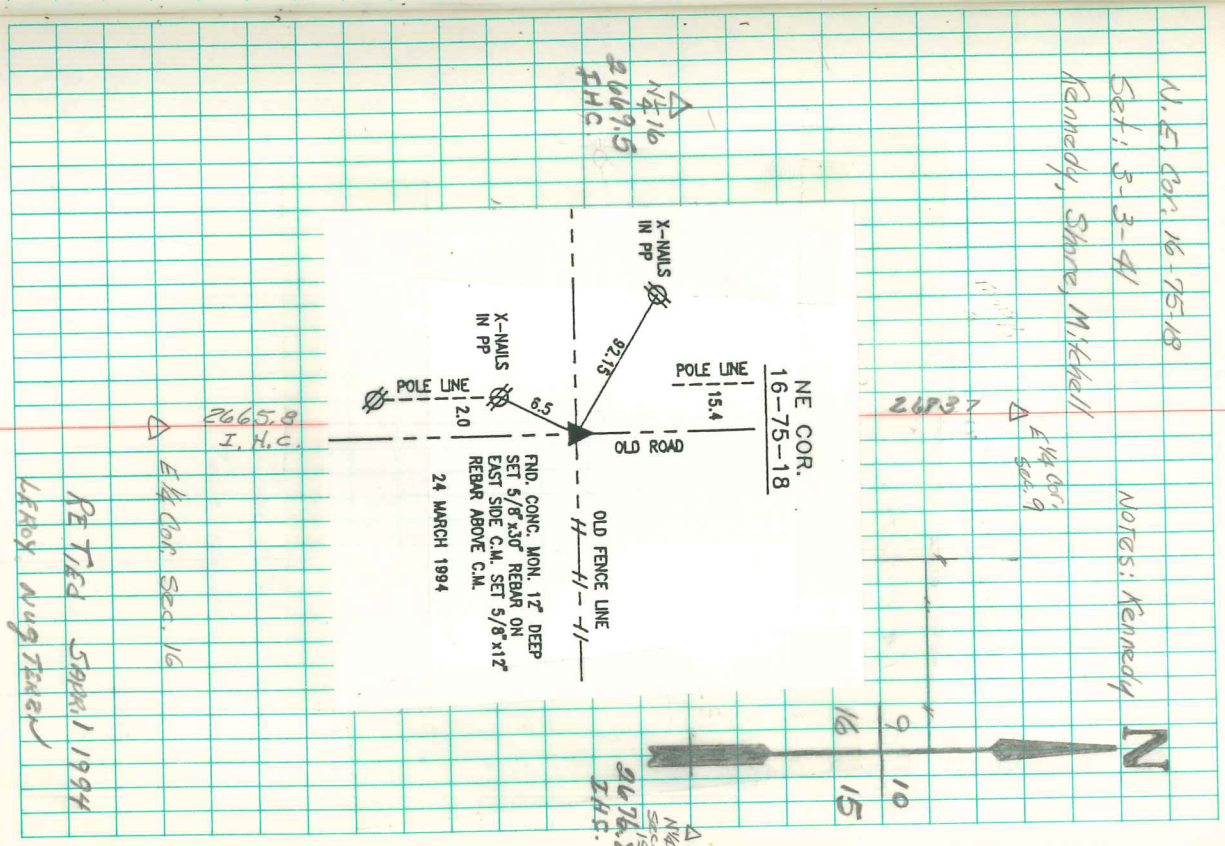
Notes: Kennedy

26737
1/4 Cor.
Sec. 9



Found 3-lime rocks standing
on end one 14"-9"-3" one 14"-7"-5"
one 24"-10"-5"
Right where we set mon.

Set Mon. over one lime rock
lowered in place.
Top Mon. 9" under top surface.
The other 2 rocks on North
Side Mon.



26768
1/4 Cor.
Sec. 9
I.H.C.

RE TIED SPRING 1994
LEROY AUG TEASDALE

26658
I.H.C.
E 1/4 Cor. Sec. 16