

KAREN SCHWANEBECK, RECORDER
 MARION COUNTY IOWA

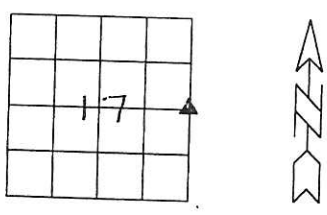
Prepared by Abie C. Davis, P.E. & L.S., 1428 Oregon St., Knoxville, IA 50138 (641) 842-5863

UNITED STATES PUBLIC LAND SURVEY CORNER CERTIFICATE
 OF

Land survey Monuments situated in Section 17, Township 75 N, Range 18 W, of the Fifth Principal Meridian, Marion County, Iowa.

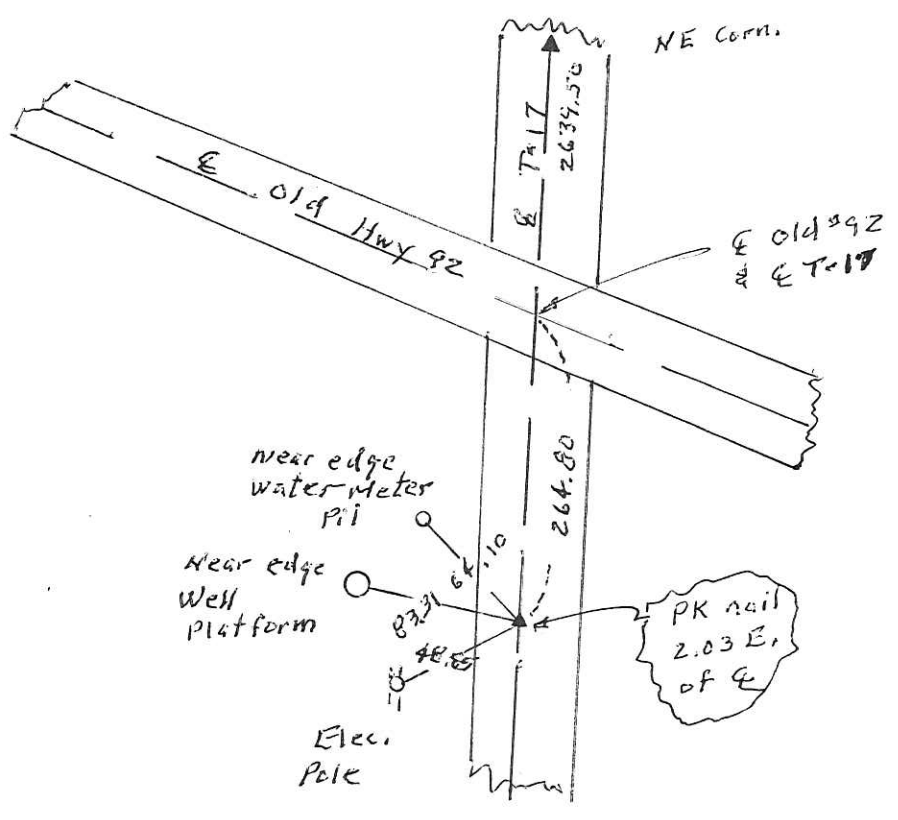
Previously recorded in Bk 1, Pg 374 in County Recorders Office.
(book, page, document number, etc.)
 Show reason for preparing this certificate, the evidence and detailed procedures used in establishing the corner positions and monumentation found or placed

Monument Description and Remarks: End PK nail under asphalt layer, set new PK and set out new ties



PLAN - VIEW

(Show a minimum of three reference ties to durable physical objects, relevant monuments and physical conditions that will enable recovery of the corner.)



I hereby certify that the survey work was completed and this land surveying document was prepared by me or under my direct personal supervision and that I am a duly licensed land surveyor under the laws of the state of Iowa

Signature: Abie C Davis
 Abie C. Davis, P.E. & L.S.

Date: 3/26/2020 Reg. No. 5594

My license renewal date is December 31, 2021

SEAL



| List Corners to be Indexed | | | |
|----------------------------|---------|-----|-------|
| Corners | Section | Twp | Range |
| E+ | 17 | 75N | 18W |

Pd \$700 Cash - Ret Abie Davis

Found limestone 3"x4" top 3"x8" bottom
12" long and 2-2" ϕ tile.

Set CM over 2-2" ϕ tile Horiz. N.E.S.
Stone on North side.

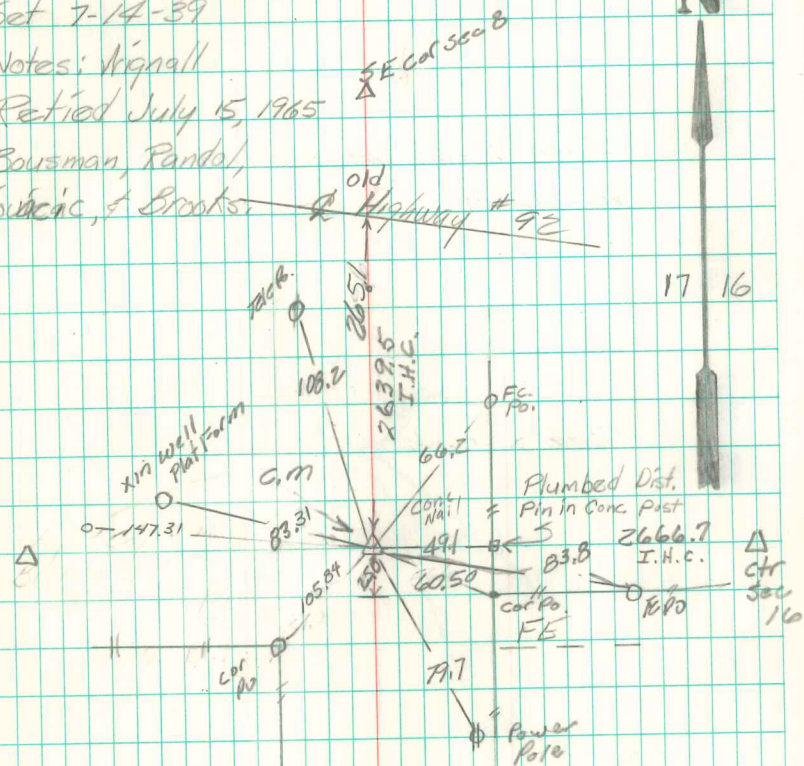
EVA Cor 17-75-18

Set 7-14-39

Notes: Nignall

Retired July 15, 1965

Bousman, Pandal,
Koulicic, & Brooks.



17 16

Retired 11/18/92

Wendell Folkerts

Found 7/16/97 Abie Davis