



Document 23-3301

Book 2023 Page 3301 Type CORNR Pages 1
Date 8/11/2023 Time 11:00 AM
Rec Amt \$7.00

NAOMI ELLIS, RECORDER
MARION COUNTY IOWA



P.O. Box 451, Oskaloosa, Iowa 52577-0451 Phone: (641)672-2526

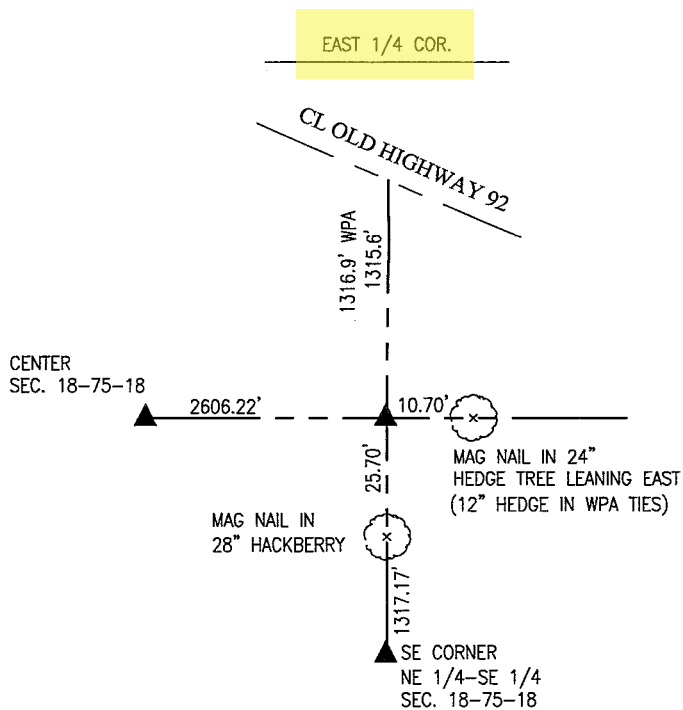
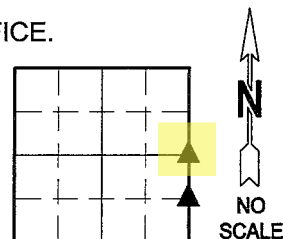
UNITED STATES PUBLIC LAND SURVEY CORNER CERTIFICATE OF

LAND SURVEY MONUMENTS SITUATED IN SECTION 18, TOWNSHIP 75, RANGE 18,
OF THE FIFTH PRINCIPAL MERIDIAN, MARION COUNTY, IOWA.

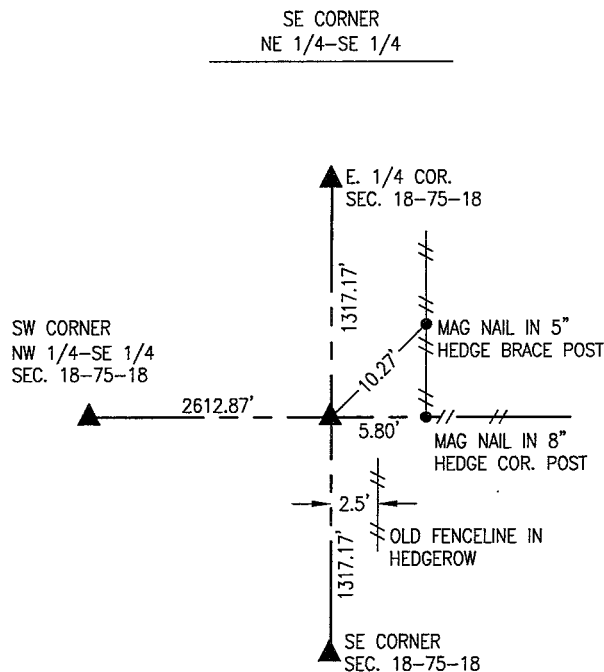
PREVIOUSLY RECORDED IN NO CERTIFICATE OF RECORD IN COUNTY RECORDER'S OFFICE.

MONUMENT DESCRIPTION AND REMARKS:

SEE BELOW



APRIL 13, 2023
 WE ACCEPTED 5/8" REBAR PLS #5594 FOUND 12" DEEP FROM REFERENCE. TIES IN MARION COUNTY ENGINEERS OFFICE. WPA REFERENCE TIES INDICATE A CONCRETE MONUMENT AT THIS CORNER. CM WAS 11.6' WEST OF 12" HEDGE TREE ON NORTH SIDE OF FENCELINE EAST. WE DUG 18" DEEP AND PROBED A 3'X3' AREA BUT COULD NOT FIND WPA CM. NO EXPLANATION IS GIVEN ON WPA REFERENCE TIES ON WHY A WITNESS CORNER WAS SET 9.24' WEST OF CORNER OR WHAT TYPE OF MONUMENT WAS USED FOR THE WITNESS CORNER.

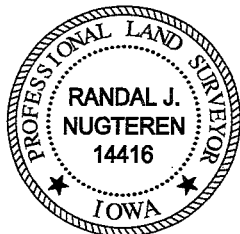


APRIL 13, 2023
 SET 5/8" REBAR PLS #14416 ON LINE AND MIDWAY BETWEEN E 1/4 CORNER AND SE CORNER OF SECTION 18. LOCATION IS SUPPORTED BY OLD FENCE EVIDENCE.

I hereby certify that this land surveying document was prepared and the related survey work was performed by me or under my direct personal supervision and that I am a duly licensed Professional Land Surveyor under the laws of the State of Iowa.

LIST CORNERS TO BE INDEXED

| CORNERS | SECTION | TOWNSHIP | RANGE |
|----------------------------|---------|----------|-------|
| E. 1/4 COR. | 18 | 75 | 18 |
| SE CORNER NE 1/4-SE 1/4 | 18 | 75 | 18 |



Randal J. Nugteren August 8, 2023
 Randal J. Nugteren, P.L.S. Date
 License number: 14416
 My license renewal date is December 31, 2024

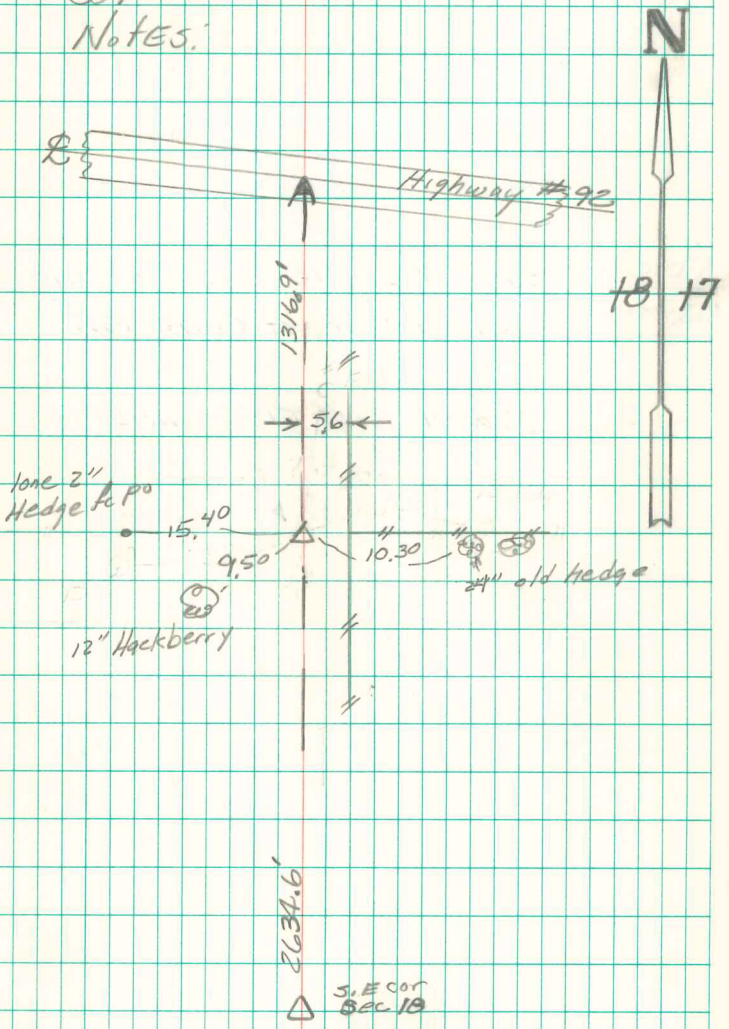
Pd #72 CK - Ret Garden Env.

9.24' East of Witness Corner
 23.7' N.E. of 12" Choke Cherry Tree
 5.8' N.E. of 15" Hackberry "
 11.6' West of 12" Hedge "
 16x4' South " FE Post

 1316x9' South of S Cor. Pavement Highway #92

E. 1/4 Cor. Sec 18-75-18

Set -
Notes:



Set 5/8" iron pin w/cap 12" deep Abie Davis 5/21/02