



Document 23-3302

Book 2023 Page 3302 Type CORNR Pages 1
Date 8/11/2023 Time 11:02 AM
Rec Amt \$7.00

NAOMI ELLIS, RECORDER
MARION COUNTY IOWA



GARDEN & ASSOC.

P.O. Box 451, Oskaloosa, Iowa 52577-0451 Phone: (641)672-2526

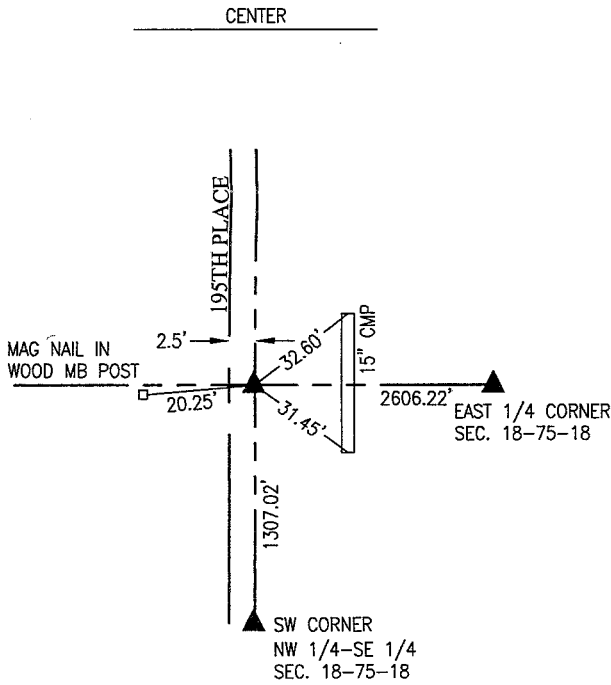
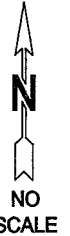
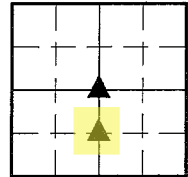
UNITED STATES PUBLIC LAND SURVEY CORNER CERTIFICATE OF

LAND SURVEY MONUMENTS SITUATED IN SECTION 18, TOWNSHIP 75, RANGE 18,
OF THE FIFTH PRINCIPAL MERIDIAN, MARION COUNTY, IOWA.

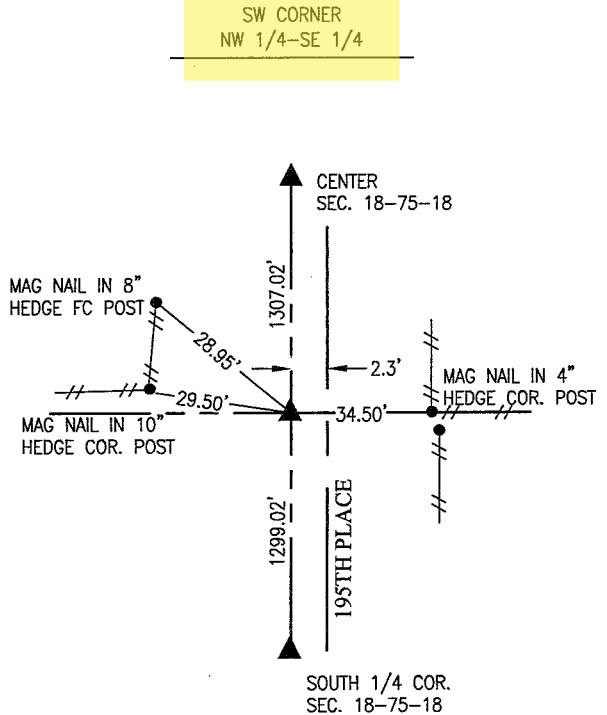
PREVIOUSLY RECORDED IN NO CERTIFICATE OF RECORD IN COUNTY RECORDER'S OFFICE.

MONUMENT DESCRIPTION AND REMARKS:

SEE BELOW

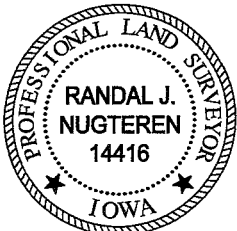


APRIL 13, 2023
 FOUND 5/8" REBAR PLS #5594 AT SURFACE OF ROAD.
 CORNER WAS SET ON 2007 SURVEY BY PLS 5594 IN BOOK
 2007 PAGE 1640.



APRIL 13, 2023
 SET 5/8" REBAR PLS #14416 ON LINE BETWEEN CENTER AND
 SOUTH 1/4 CORNER AND IN LINE WITH LONG STANDING
 FENCELINE EAST.

I hereby certify that this land surveying document was prepared and the related survey work was performed by me or under my direct personal supervision and that I am a duly licensed Professional Land Surveyor under the laws of the State of Iowa.



Randal J. Nugteren August 8, 2023
 Randal J. Nugteren, P.L.S. Date
 License number: 14416
 My license renewal date is December 31, 2024

LIST CORNERS TO BE INDEXED

CORNERS	SECTION	TOWNSHIP	RANGE
CENTER	18	75	18
SW CORNER NW 1/4-SE 1/4	18	75	18

Pd #702 OK - Ret Garden Env.