



Document 23-3303

Book 2023 Page 3303 Type CORNR Pages 1  
Date 8/11/2023 Time 11:03 AM  
Rec Amt \$7.00

NAOMI ELLIS, RECORDER  
MARION COUNTY IOWA



P.O. Box 451, Oskaloosa, Iowa 52577-0451 Phone: (641)672-2526

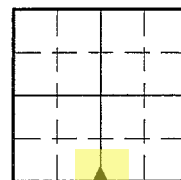
UNITED STATES PUBLIC LAND SURVEY CORNER CERTIFICATE OF

LAND SURVEY MONUMENTS SITUATED IN SECTION 18, TOWNSHIP 75, RANGE 18,  
OF THE FIFTH PRINCIPAL MERIDIAN, MARION COUNTY, IOWA.

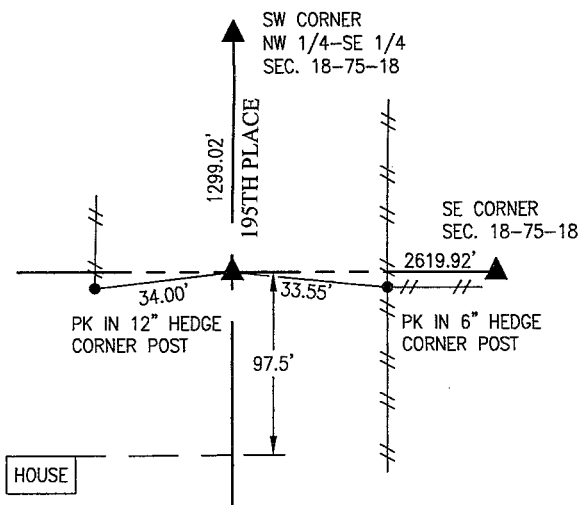
PREVIOUSLY RECORDED IN SEE BELOW IN COUNTY RECORDER'S OFFICE.

MONUMENT DESCRIPTION AND REMARKS:

SOUTH 1/4 CORNER RECORDED IN BOOK 2007 PAGE 1542

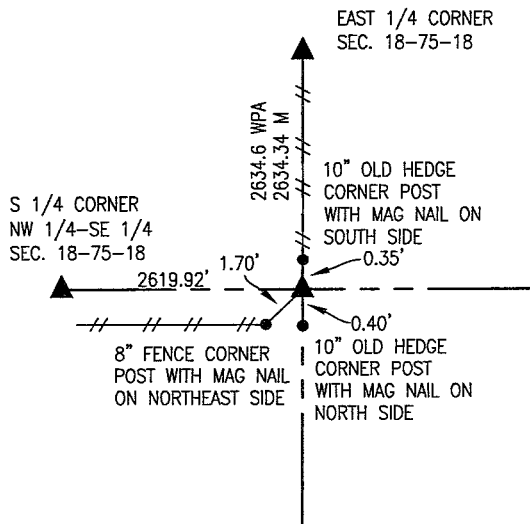


S 1/4 CORNER



APRIL 3, 2023  
FOUND WPA CM 12" DEEP. FOUND 1" PIPE WITH YPC 4" DEEP  
ON NW SIDE OF CM. FOUND 3/4" PIPE YPC 6708 8 1/2" LONG  
ANGLED 45 DEGREES ABOVE CM. DROVE 1" PIPE 4" DEEPER  
AND SET 3/4" PIPE ABOVE CM.

SE CORNER

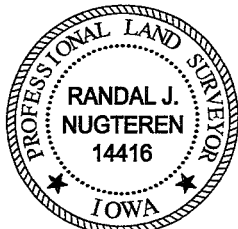


APRIL 13, 2023  
WPA REFERENCE TIES INDICATE A CM AND SANDSTONE AT THIS  
CORNER. DUG AND PROBED A 3X3' AREA AROUND OLD CORNER  
POSTS. COULD NOT FIND WPA CM. SET 5/8" REBAR PLS 14416  
BETWEEN OLD CORNER POSTS.

I hereby certify that this land surveying document was prepared and the  
related survey work was performed by me or under my direct personal  
supervision and that I am a duly licensed Professional Land Surveyor  
under the laws of the State of Iowa.

LIST CORNERS TO BE INDEXED

CORNERS	SECTION	TOWNSHIP	RANGE
S. 1/4 COR.	18	75	18
SE CORNER	18	75	18



*Randal J. Nugteren August 8, 2023*  
Randal J. Nugteren, P.L.S. Date  
License number: 14416  
My license renewal date is December 31, 2024

*Pd #1720ck - Ret Garden Env.*

