

5 1/4 Cor. 1-75-18

Set. 11-21-20

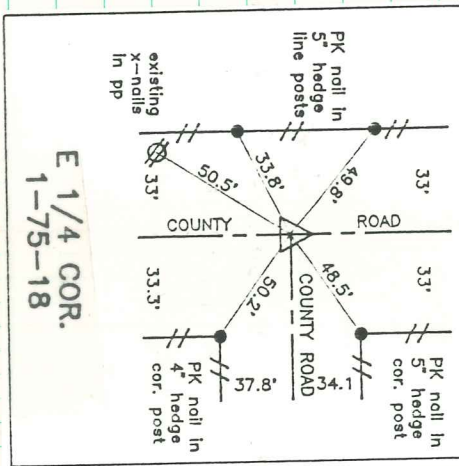
Kennedy, Emeyer, Sharp

Retired By

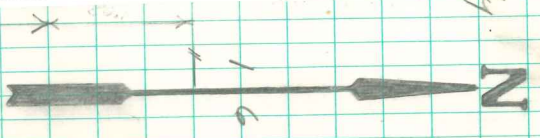
Johnson, Vinson

Notes: Kennedy

Fd. c.m. 28" deep. Set 5/8" x 3/4" rebor on West side. Set 5/8" x 1/2" rebor 6" deep with 60d spk. & blue top flush. 30 Nov. 1992



E 1/4 COR. 1-75-18



RETIRED 30 Nov 1992
LEDDY MCKEEN

Found granite rock 14"-8"-8"
over 2-8" A tile one broken
(Watkins tile)
Found rock in graden ditch
grader had recently graded it out.
Right where we set Mon.

Set Mon. over both tile
lying flat North & South.
rockery under Mon.
rock on North side Mon.