

Found Sandstone and 8-8" tile

Set CM over 8-8" tile laying
down wts. Face Stone on N. Side CM.

N 1/4 Cor. 1-75-18

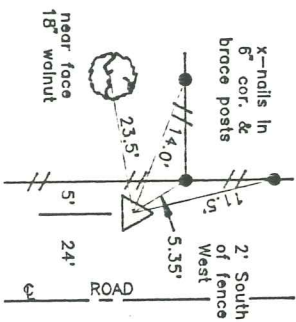
Set. 7

Party: Frazier

Hansen, Nordell

Notes: Mingo

Set 5/8" x 3/8" rebar in West road ditch.
Established on line from SE cor. 36 across
stone at SE cor. SW-SE sec. 36 & 31.7'.
West of E road extended So. from ctr. 36.
There are double cor's. at this location
according to survey by Joseph Nye in Sept.
1903. Reference ties at Co. Eng. office to
N 1/4 cor. 1-75-18 are actually to S 1/4
cor. 36-76-18. 18 Dec. 1992



N 1/4 COR.
1-75-18

RETIRED 18 DEC 1992
LEROY MINGO