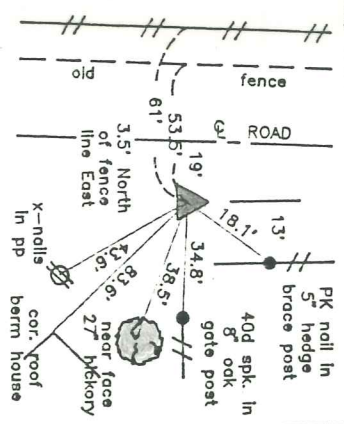


NE COR. SE-NW

1-75-18

Set 5/8" x 30" rebar 6" deep on East foreslope of road, 60d spk. & blue top flush. Established on line & proportioned dimension between ctr. & N 1/4 cor. using dimensions from 1853 survey in surveyor's record A-342. 3 July 1993



NE COR. SE-NW
1-75-18

RETRIED 8 JULY 93
LEADY MUDGIBEN

