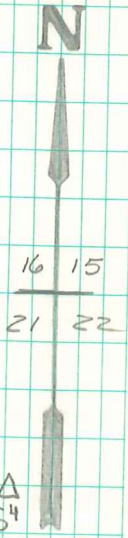
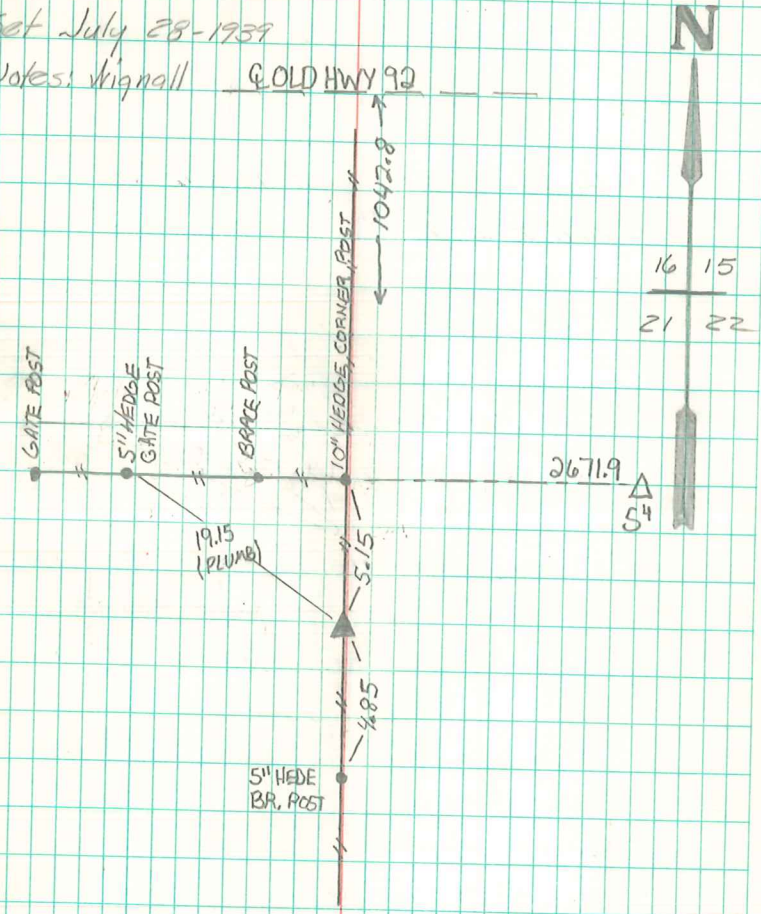


Found granite stone 10" x 12" x 6" and  
 2-2" round tile in vertical position  
 lowered 2 tile in place N&S. Horizon.  
 Set C.M. over tile and placed stone  
 on North Side of C.M.

N.E. Cor. 21-75-18

Set July 28-1939

Notes: Vignall GOLD HWY 92



2671.9  
 5"

RE-TIED 7-16-12  
 ABIE C. DAVIS