

Found Wigger Head 10" x 12" x 6"  
and 2-2"  $\phi$  tie

Set CM over 2-2"  $\phi$  tie Horiz.  
w/ 1/2" boulder on N. side,

10/19/2009 - FOUND BRASS CAPPED CONCRETE MONUMENT  
2' DEEP. PLACED ONE FOOT IRON NAIL ON  
NORTH SIDE OF MONUMENT & SET NEW TIES

IOWA STATE PLANE SOUTH (MADRS) COORDINATES

N: 471201.3963

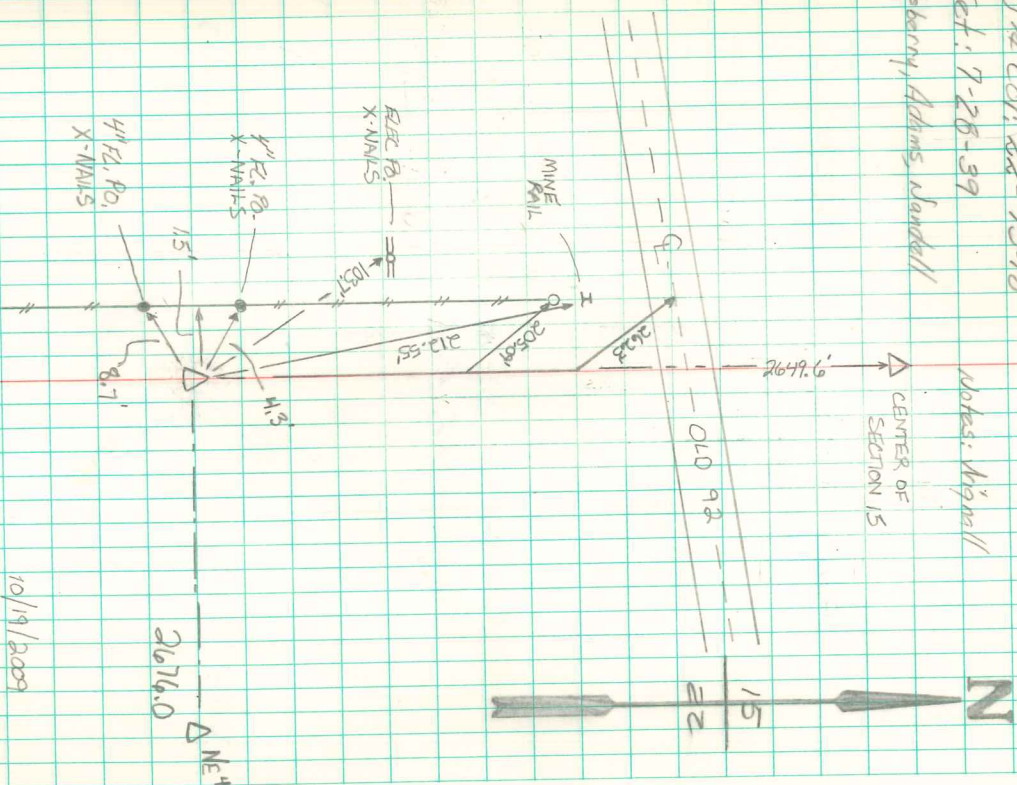
E: 1800157.351

ELEV: 834.3'

N $\frac{1}{2}$  CON. RR - 75-18  
Set: 7-28-59  
Elsberry, Adams, Maudsl

Notes: Wigger

△ CENTER OF SECTION 15



10/19/2009  
FOUND & RETIED  
D MORGAN &  
B. HATCH