



Document 17-5192  
 Book 2017 Page 5192 Type CORNR Pages 1  
 Date 11/27/2017 Time 2:33 PM  
 Rec Amt \$7.00

KAREN SCHWANEBECK, RECORDER  
 MARION COUNTY IOWA

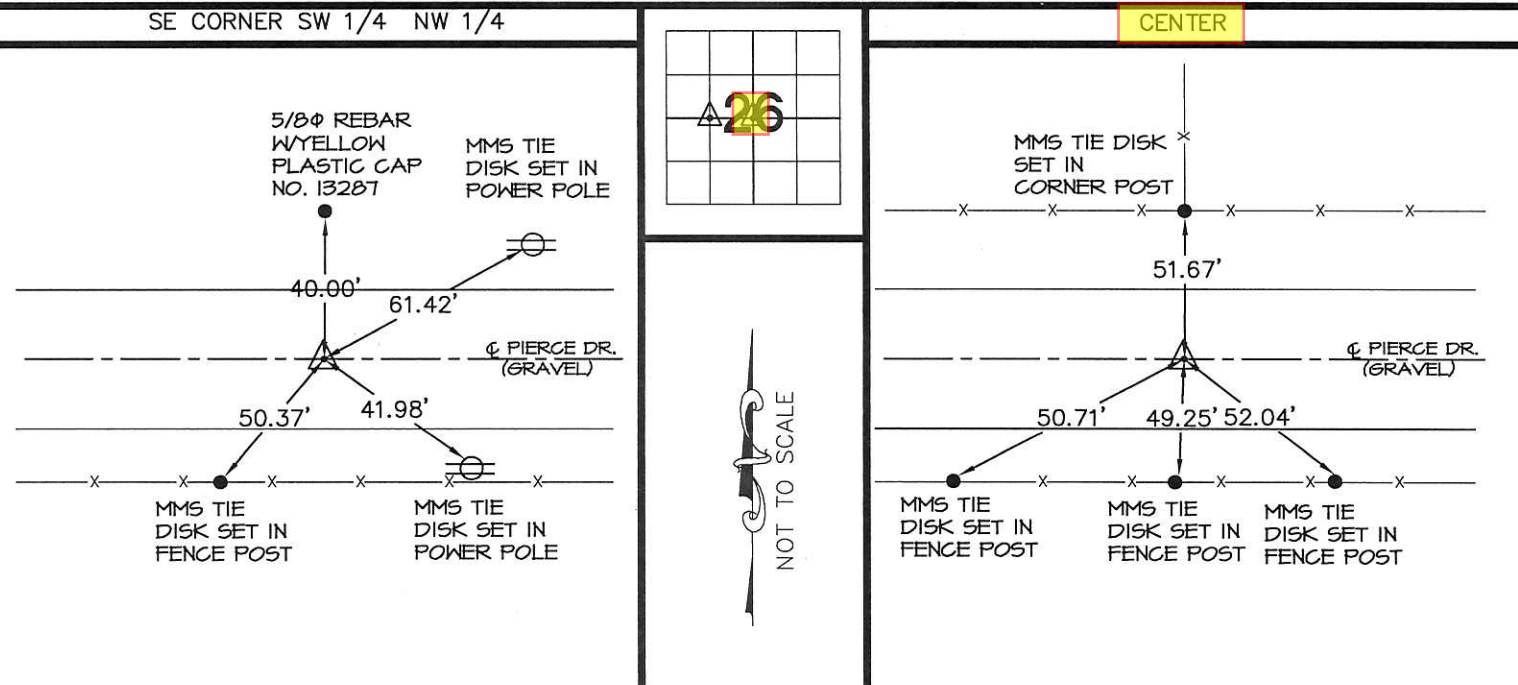
—PREPARED BY AND RETURN TO: MMS CONSULTANTS, INC. 1917 S. GILBERT ST. IOWA CITY, IOWA 52240 (319)351-8282—

# U.S. PUBLIC LAND SURVEY CORNER CERTIFICATE

FOR LAND SURVEY MONUMENTS SITUATED IN SECTION 26, TOWNSHIP 75 NORTH, RANGE 18 WEST, OF  
 THE FIFTH PRINCIPAL MERIDIAN, MARION COUNTY, IOWA

- REASON FOR PREPARING CERTIFICATE:
- A) THERE IS NO CERTIFICATE FOR THE CORNER ON FILE WITH THE RECORDER OF THE COUNTY IN WHICH THE CORNER IS LOCATED.
  - B) CORNER FOUND, OR ITS POSITION, DIFFERS FROM PREVIOUSLY RECORDED CERTIFICATE RECORDED IN BOOK     , AT PAGE     .
  - C) THE CORNER MONUMENT WAS REPLACED OR MODIFIED.
  - D) THE REFERENCE TIES REFERRED TO IN AN EXISTING PUBLIC RECORD ARE NOT CORRECT.

## RECOVERY TIE DRAWING

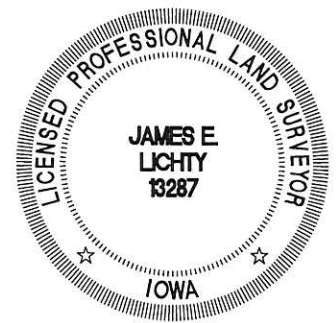


MONUMENT DESCRIPTION AND REMARKS :  
 SET 5/8"Ø REBAR WITH YELLOW PLASTIC NO. 13287 3"± DEEP IN CENTERLINE OF PIERCE DRIVE AT THE MIDPOINT BETWEEN THE CENTER OF SECTION AND THE WEST 1/4 CORNER ALL WITHIN SECTION 26-T75N-R18W OF THE 5TH P.M. TIED OUT AS SHOWN ABOVE.

MONUMENT DESCRIPTION AND REMARKS :  
 SET 5/8"Ø REBAR WITH YELLOW PLASTIC NO. 13287 3"± DEEP IN CENTERLINE OF PIERCE DRIVE BY INTERSECTING THE NORTH 1/4 CORNER TO THE SOUTH 1/4 CORNER AND THE SOUTHEAST CORNER OF THE SOUTHWEST 1/4 NORTHEAST 1/4 TO THE W 1/4 CORNER ALL WITHIN SECTION 26-T75N-R18W OF THE 5TH P.M. TIED OUT AS SHOWN ABOVE.

I hereby certify that this land surveying document was prepared and the related survey work was performed by me or under my direct personal supervision and that I am a duly licensed Professional Land Surveyor under the laws of the State of Iowa.

*James E. Lichty* 11/24 2017  
 JAMES E. LICHTY, L.S.  
 Iowa Lic. No. 13287  
 My license renewal date is December 31, 20 18.



Drawn by: JRD  
 Scale: NOT TO SCALE  
 Checked by: JEL  
 Date: 04/03/2017  
 Field Book: 1173  
 Project No: 10201-001

U.S. PUBLIC LAND SURVEY  
 CORNER CERTIFICATE  
 SEC. 26-T75N-R18W  
 TRACY, IOWA  
 MARION COUNTY, IOWA

MMS CONSULTANTS, INC.  
 IOWA CITY, IOWA 52240  
 (319) 351-8282  
 www.mmsconsultants.net



Date: 1-1  
 Revision: 1-1

05:110201\10201-001-01-24/2017 3:46:17 PM  
 P:\5100 c\k - Ret\mms consultants env