

UNITED STATES PUBLIC LAND SURVEY CORNER CERTIFICATE

OF

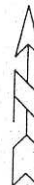
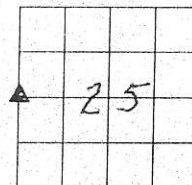
Land survey Monuments situated in Section 25, Township 75 N, Range 18 W, of the Fifth Principal Meridian, Marion County, Iowa.

Previously recorded in N/A in County Recorders Office.

Show reason for preparing this certificate, the evidence and detailed procedures used in establishing the corner positions and monumentation found or placed

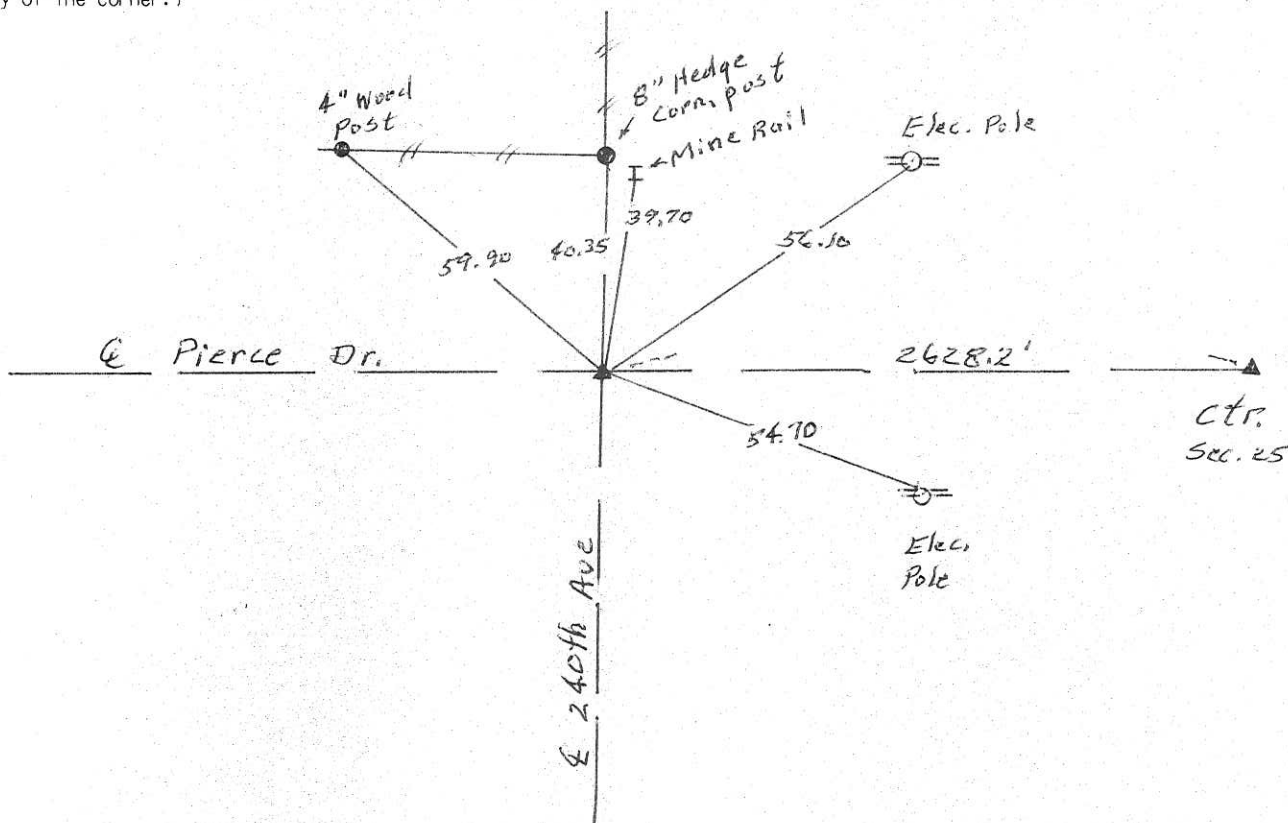
Monument Description and Remarks: Found Iron Pin

over CM



PLAN - VIEW

(Show a minimum of three reference ties to durable physical objects, relevant monuments and physical conditions that will enable recovery of the corner.)



I hereby certify that the survey work was completed and this land surveying document was prepared by me or under my direct personal supervision and that I am a duly licensed land surveyor under the laws of the state of Iowa

Signature: Abie C. Davis

Abie C. Davis, P.E. & L.S.

Date: 3/21/19 Reg. No. 5594

My license renewal date is December 31, 2019

SEAL



List Corners to be Indexed

Corners	Section	Twp	Range
W 4 Corner	25	75 N	18 W

