



Document 17-4726

Book 2017 Page 4726 Type CORNR Pages 1  
Date 10/25/2017 Time 10:42 AM  
Rec Amt \$7.00

KAREN SCHWANEBECK, RECORDER  
MARION COUNTY IOWA

-PREPARED BY AND RETURN TO: MMS CONSULTANTS, INC. 1917 S. GILBERT ST. IOWA CITY, IOWA 52240 (319)351-8282-

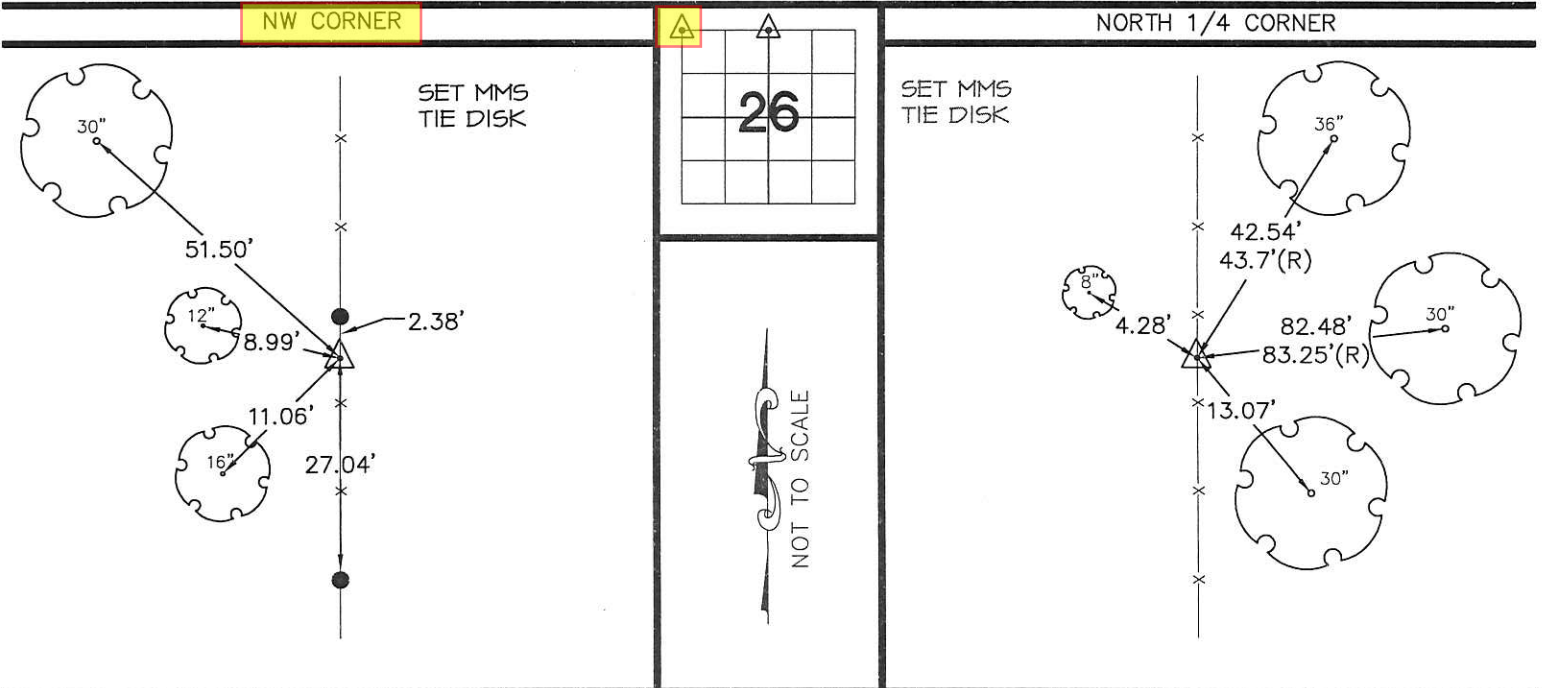
# U.S. PUBLIC LAND SURVEY CORNER CERTIFICATE

FOR LAND SURVEY MONUMENTS SITUATED IN SECTION 26, TOWNSHIP 75 NORTH, RANGE 18 WEST, OF  
THE FIFTH PRINCIPAL MERIDIAN, MARION COUNTY, IOWA

### REASON FOR PREPARING CERTIFICATE:

- A) THERE IS NO CERTIFICATE FOR THE CORNER ON FILE WITH THE RECORDER OF THE COUNTY IN WHICH THE CORNER IS LOCATED.
- B) CORNER FOUND, OR ITS POSITION, DIFFERS FROM PREVIOUSLY RECORDED CERTIFICATE RECORDED IN BOOK     , AT PAGE     .
- C) THE CORNER MONUMENT WAS REPLACED OR MODIFIED.
- D) THE REFERENCE TIES REFERRED TO IN AN EXISTING PUBLIC RECORD ARE NOT CORRECT.

## RECOVERY TIE DRAWING



**MONUMENT DESCRIPTION AND REMARKS :**  
 FOUND STANDARD CONCRETE MONUMENT(SCM) BELOW A 14"X12"X4" STONE 2"± DEEP, SET A 5/8" REBAR WITH YELLOW PLASTIC CAP NO. 13287 OVER SCM AND STONE TO THE WEST OF SAID REBAR. TIED OUT AS SHOWN ABOVE.

NOTE: THIS MONUMENT WAS FOUND USING FIELD NOTE TIES FROM AUGUST 20TH, 1940 THAT WERE OBTAINED FROM THE MARION COUNTY ENGINEERS OFFICE.

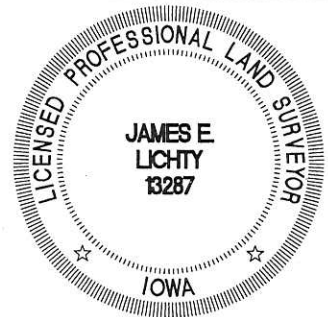
**MONUMENT DESCRIPTION AND REMARKS :**  
 SET 5/8"Ø REBAR WITH YELLOW PLASTIC NO. 13287 IN NORTH-SOUTH WIRE FENCE EXPOSED 4"±. TIED OUT AS SHOWN ABOVE.

NOTE: PROBED EXTENSIVELY FOR A CONCRETE MONUMENT THAT WAS SET AUGUST 7TH, 1936 ACCORDING TO FIELD NOTES FROM THE MARION COUNTY ENGINEERS OFFICE. NO MONUMENT WAS FOUND. CORNER IS SET ON LINE BETWEEN THE NW AND SW CORNERS OF SECTION 26. TWO TREES FROM 1939 TIE STILL EXIST AND WERE USED IN CONSIDERATION OF MONUMENT PLACEMENT.

NE

I hereby certify that this land surveying document was prepared and the related survey work was performed by me or under my direct personal supervision and that I am a duly licensed Professional Land Surveyor under the laws of the State of Iowa.

*James E. Lichty* 10/23 2017.  
 JAMES E. LICHTY, L.S.  
 Iowa Lic. No. 13287  
 My license renewal date is December 31, 2018.



R197000 - Ret MMS Consultants only

Drawn by: JRD  
 Scale: NOT TO SCALE  
 Checked by: JEL  
 Date: 04/03/2017  
 Field Book: 1173  
 Project No: 10201-001

**U.S. PUBLIC LAND SURVEY CORNER CERTIFICATE**  
 SEC. 26-T75N-R18W  
 TRACY, IOWA  
 MARION COUNTY, IOWA

MMS CONSULTANTS, INC.  
 IOWA CITY, IOWA 52240  
 (319) 351-8282  
 www.mmsconsultants.net



| Date | Revision |
|------|----------|
|      | 1-1      |

N.E. Cor. 27-75-18

Set: 8-20-40

Notes: N 19911

Dug hole 16" x 32" x 24" and found  
no evidence of Stone on tile,  
established by proportional (single)  
measurements, set CM. over ching  
and Crockery, placed stone on  
top CM.

