

Prepared by: Abie C. Davis, P.E. & L.S., 1428 Oregon St., Knoxville, Iowa 50138 Phone: (515) 842-5863

UNITED STATES PUBLIC LAND SURVEY CORNER CERTIFICATE SLS19-94

OF

Land survey Monuments situated in Section 28, Township 75N, Range 18W, of the Fifth Principal Meridian, Marion County, Iowa.

Previously recorded in N/A in County Recorders Office.

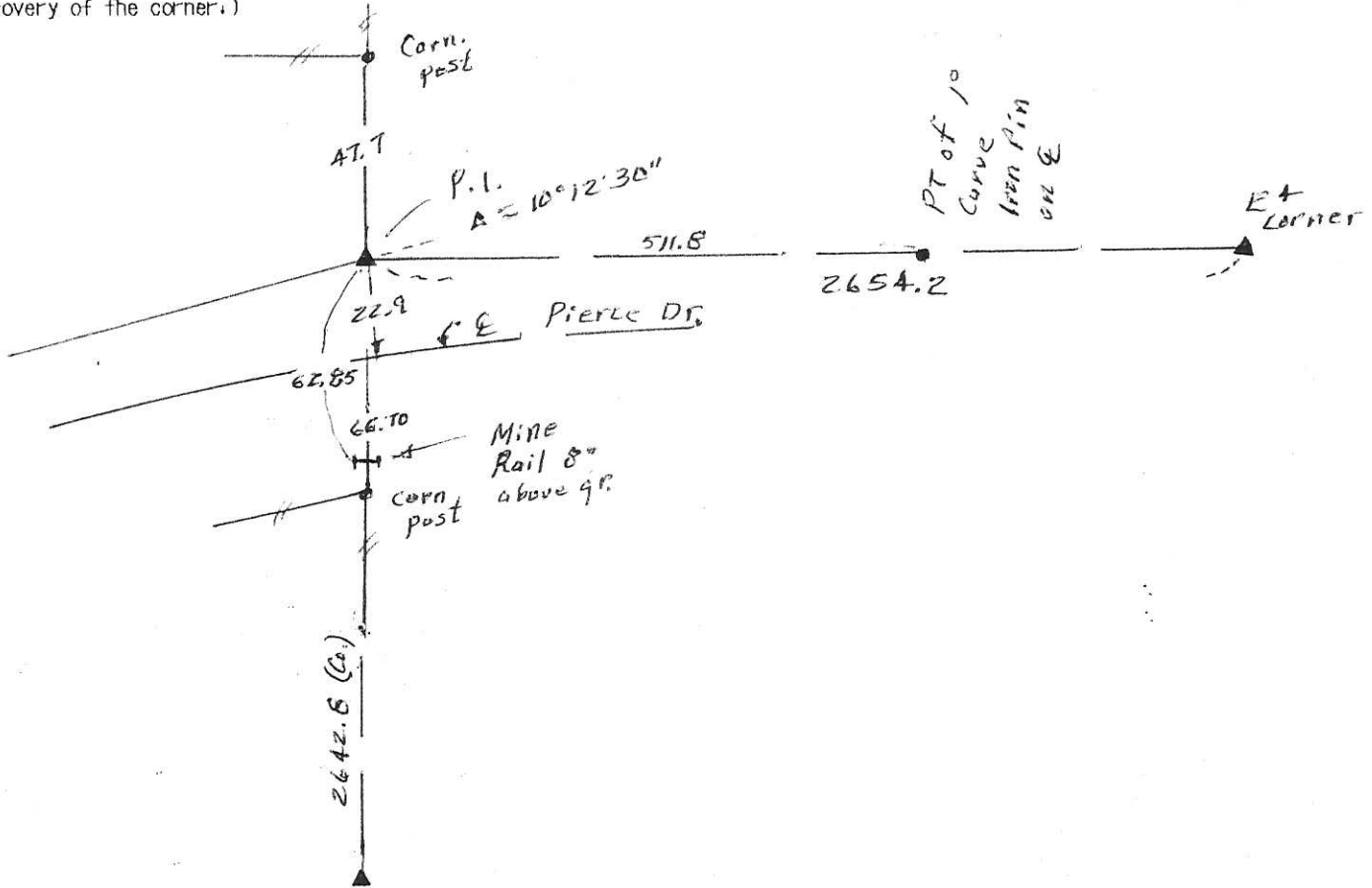
Show reason for preparing this certificate, the evidence and detailed procedures used in establishing the corner positions and monumentation found or placed

Monument Description and Remarks: Corner monument was lost in eroded north roadway ditch. Reset from old ties and set 5/8" x 30" Iron pin w/ Alum. cap.



PLAN - VIEW

(Show a minimum of three reference ties to durable physical objects, relevant monuments and physical conditions that will enable recovery of the corner.)



I hereby certify that the survey work was completed and this land surveying document was prepared by me or under my direct personal supervision and that I am a duly licensed land surveyor under the laws of the state of Iowa

Signature: Abie C. Davis
Abie C. Davis, P.E. & L.S.

Date: 7/11/16 Reg. No. 5594

My license renewal date is December 31, 2017

List Corners to be Indexed

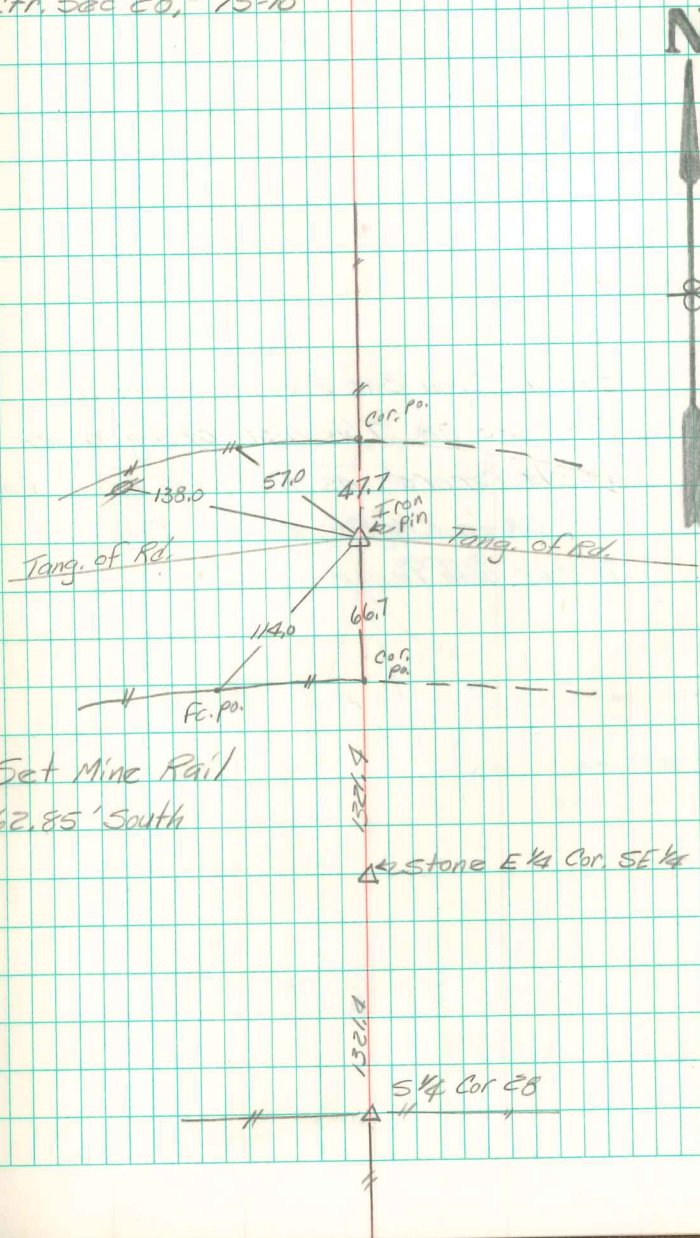
Corners	Section	Twp	Range
<u>ctr.</u>	<u>28</u>	<u>75N</u>	<u>18W</u>

SEAL



Set $\frac{3}{4}$ " Iron Bar at Double Distance
from $S\frac{1}{4}$ Cor. 28 to Stone at $E\frac{1}{4}$ Cor.
of the $S.W.\frac{1}{4}$ Sec 28.

Ctr. Sec 28, - 75-18



Set Mine Rail
62.85' South